

Mail Order Catalogue **Autumn 2020**

BULBS AND PLANTS TO FLOWER THIS
AUTUMN AND NEXT SPRING

Telephone 01460 242177
www.avonbulbs.co.uk

Orders over £100 are sent
free of P&P
(UK mainland
only)



WINNERS OF...

30 Gold Medals at Chelsea in 31 years



WELCOME

When Lockdown occurred in March we were all concerned as to how the year would turn out with all our events from small plant sales to the big flower shows being cancelled. Having potted all we needed for these events the previous autumn this looked serious with only weeks to go before those plants flowered! We managed at short notice to list and sell by Mail Order much of what we should have taken to those flower shows, although time was not on our side with such an early and hot spring. However, with the welcome support of our customers old and new we managed to sell most of those plants - although in retrospect we began to realise that the cost of delivery of potted plants and all that compost is somewhat different from the bulbs alone!

With little to look after and no shows to be busy at we then had to furlough the staff on a rotational basis and reduce things to a skeleton crew for 6 weeks. That coincided with the warmest, sunniest, bluest-skied-spring which resulted in drought-like conditions even in May so the novelty passed by very quickly with so much watering to do. In those uncertain times and with a lot of new customers having bought our potted plants I began to wonder how I could make the catalogue more useful, particularly to newer gardeners at a time when gardening is gaining in popularity again. My solution was to rearrange the catalogue into an order that is determined by the flowering time of the bulbs. That, I thought, should help those new gardeners and those who feel uncomfortable with Latin names surely? Additionally having written, amended, tweaked, changed and prodded at an alphabetically arranged catalogue for 30 years I was quite honestly a bit bored by the straightjacket provided by an alphabetic listing and the logic of this change seemed to make sense. So, now having explained myself and got my excuses in first, it is time for you to try it and hopefully find something new in the proximities that would not have existed before and perhaps ideas for plant combinations that now become more clear – and no doubt I shall hear what you think! **There is now a detailed Index to help you, see pages 52 and 53.**

Successful Gardening!

CHRIS IRELAND-JONES

Alan Street – 41 years at Avon Bulbs

Alan joined Avon Bulbs (then owned by Walter Stagg) in 1979, then at Bathford on the banks of the Avon near Bath. 41 years later he is still the Head Nurseryman and a much respected authority on Snowdrops in particular. He chaired the RHS trial of *Eucomis* grown at Wisley in 2018 and 2019 and has also been on the assessment panel on *Agapanthus* at those trials at Wisley. A fine *Agapanthus* with an RHS Award of Merit (A. Alan Street) and a *Galanthus* (G. Alan's Treat) now carry his name. I am not sure how many Gold medals he has won at all the Flower Shows that Avon Bulbs have attended over those years, but there are 31 Gold medals at the RHS Chelsea Flower Show just for starters.



AVON BULBS CONTACTS

EMAIL:
info@avonbulbs.co.uk

WEB:
www.avonbulbs.co.uk

TEL:
01460 242177
01460 249060

Burnt House Farm
Mid Lambrook
South Petherton,
Somerset
TA13 5HE

MORE INFORMATION

The website allows much more detail about individual plants and we are gradually building up that information source, so do have a look online if you are left wanting to know more about a particular plant or family and their suggested planting instructions. Individual planting suggestions are provided again when you get sent your order.

The website also indicates availability and if an item is **Sold Out** it will be indicated there. This is particularly useful for later orders.

If an item is marked **Out of Season** you can "Register an Interest" and with no commitment receive an email back when it is next in stock and can be ordered.

There are occasionally varieties that missed the catalogue and get listed online.

LATE SUMMER 2020

Plants and Bulbs that mostly flower in the autumn, soon after planting, or else items that just prefer early planting.

We aim to deliver orders made from this section mid August to early September and will close this section in mid September. Please use the order form at the end of this section.



Acis autumnalis



Colchicum agrippinum



Colchicum autumnale album



Colchicum speciosum



Scilla autumnalis



Colchicum autumnale



Colchicum byzantinum Innocence



Colchicum Water-Lily

ACIS

AUTUMNALIS



Slender wiry green or russet coloured stems, carrying delicate looking white papery bells. They were thought to be autumn flowering forms of the snowflake family but are now in a distinct group of their own. Ideal for a trough or container that stays that much drier. Plant the bulbs (only the size of large peas) 3" (7.5cm) deep, nearly touching.

Aug/Sept 106-10 5" (22cm) £8.00 for 5

SCILLA

AUTUMNALIS

Hardy, but uncommon small bulbous natives of the south-west of the UK, these are incredibly long-lasting in flower. Bright blue flowers up a fine wiry stem, lasting ages. They need a sunny, well-drained soil.

Aug/Oct 125-18 5" (12cm) £7.00 for 3

Easy to grow in reasonably deep moisture-retentive soil, these appear from their summer dormancy without their leaves to flower in the autumn – hence their common name of 'naked ladies'. A pointer to the end of summer, their bright flowers last incredibly well considering their apparent fragility. The leaves appear in the early spring. They need planting 3" (8cm) deep – perhaps a little more for ones with bigger bulbs – and 6" (15cm) apart. They will naturalise effectively, but the mower will have to be restrained until the leaves wither away in June. **Please order early – after the end of September they seem to flower regardless of the conditions**



AGRIPPINUM

A smaller plant than the others we list and one to treasure in a raised bed or in a trough. The flowers open nearly flat with pointed tips, covered in wonderful darker pinkish purple tessellations (chequering). An unusual and special plant of which we only have a small number, but none too difficult if you have the right place.

Sept 73-19 4" (10cm) £5.00



AUTUMNALE

Softly, satin-sheened in mauve. They naturalise most effectively either in sun or partial shade where they often produce several flowers from each corm. An easy British native known as Meadow Saffron, Wychwood Forest has thousands flowering each autumn.

Sept 73-05 6" (15cm) £12.00 for 3

AUTUMNALE ALBUM



The white-flowered form of the species above, although some are pinkish-white. They tolerate full sun but are especially useful in some shade in damp, but not waterlogged conditions.

Sept 73-06 6" (15cm) £9.00 for 3

BYZANTINUM INNOCENCE



Thickly textured goblet shaped flowers in white with purple tips to the very ends of the petals and styles. Big bulbs which provide an eye-catching combination when they come to flower.

Sept 73-25 6" (15cm) £17.00 for 3

SPECIOSUM

The best of the larger forms for most gardens, these spread and naturalise effectively. Stronger stemmed and later flowering than C. autumnale with longer flower stems and more richly coloured thick, rounded rosy pink-lilac petals.

Sept/Oct 73-15 8" (20cm) £10.00 for 3

WATER-LILY



A multi-petalled variety which opens out widely in the sun with multiple flower stems, flowering somewhat later than the others. Surprisingly resilient to the weather despite its appearance.

Oct 73-23 6" (15cm) £12.00 for 3

Flowering time	Flowering height
Item Code	Price



Amaryllis Avon's belladonna hybrids



Nerine flexuosa alba



Crocus boryi



Crocus goulimy



Amaryllis X Amarygia parkeri alba



Sternbergia lutea angustifolia



Crocus ligusticus

AMARYLLIS

Amaryllis (and their hybrids) are winter growing, hence with exposed leaves in winter they need to be planted in a sheltered site where they are unlikely to be chilled below about -4°C e.g. a cool conservatory should be fine, with the pots moved outside in the early spring. A summer baking in dry conditions 'ripens and primes' the bulbs for flowering. In favoured spots it might be possible to grow them successfully outside.

AVON'S BELLADONNA HYBRIDS

We used to grow many different named forms of *A. belladonna* in our unheated glasshouse but a run of cold winters led to a dip in demand twenty years ago and we decided to use that growing space better. The *Amaryllis* were moved to a tunnel where they have recovered since, but where their labelling has become a bit muddled. Most are the tall pink *A. 'Johannesburg'*, some *A. purpurea major* (illustrated) and there are also some dark cerise ones that we inherited as *A. 'New Zealand Red'*. They will be big bulbs, but possibly different forms - pot luck as to which you receive.

Sept/Oct 56-13 20" (50cm) £8.75 or £22.00 for 3

AMARYLLIS X AMARYGIA PARKERI ALBA

A hybrid between *Amaryllis* and *Brunsvigia* producing very large bulbs. Flowering with apple-white trumpets with a huge perfume arranged all around a green stem.

Sept/Oct 56-10 20" (50cm) £8.75

NERINE

FLEXUOSA ALBA

A winter growing species (all the others we grow are summer growing) so these require a bit more shelter. The frilly white petals however last ages in flower and in sheltered gardens are a treat in the autumn.

Sept/Oct 33-23 14" (35cm) £9.00 for 3

STERNBERGIA

LUTEA ANGUSTIFOLIA

For warm conditions and often found at the base of a wall and under a shrub that provides summer dryness, ours are half under a big *Sarcococca*. Chalky soil and good drainage suits them perfectly. Brilliant bright green foliage in late summer and winter and late summer flowering in brilliant yellow. The *angustifolia* group are shorter tubed and a bit less goblet shaped than *S. lutea*. Home grown stock.

Oct 126-06 4" (10 cm) £12.00 for 3

CROCUS AUTUMN FLOWERING FORMS

*Flowering in the late autumn (except for one that flowers in the very early spring) These Autumn flowering Crocuses bloom as a reaction to the lowering of the soil temperatures (and the dampening of the soil) at the end of the summer. The spring flowering forms (listed in the Autumn section of our catalogue) flower as soil temperatures rise. Some of these are more difficult to grow than others, but *C. speciosus* should be a feature of any garden providing a dreamy violet splash of colour in late September and October (and is probably the easiest). We may be able to add some more varieties to this list Online later in the summer.*

BORYI

A Mediterranean beauty probably best potted and protected over winter here, that way you can also give them a warm dry summer rest which they need. White flowered with pretty orange style branches. Rare, so stock limited.

Nov 77-40

5" (12cm) £8.00 for 3

GOULIMY

Too Grecian in origin for 'ordinary' outdoor conditions in the UK, but in well drained compost in a pot to which you can provide some protection (with a dry summer rest) these are beautiful flowers in both their shape and their soft lilac colouration. Stock limited.

Nov 77-36

5" (12cm) £7.00 for 3

LIGUSTICUS (MEDIUS)

Found in the wild at altitude in the southern maritime Alps of France and Italy these are pale purple or lilac in flower with protruding orange feathery stigmas much like those of *C. sativus*. Suitable for near deciduous shrubs or in light grass.

Oct 77-41

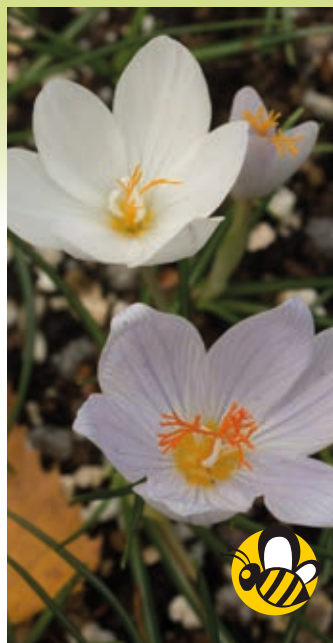
5" (12cm) £5.50 for 10



Plants we list which have received the RHS Commendation 'Award of Garden Merit' are now tagged with the trophy symbol. Space does not allow us to add the hardiness rating - please be aware the award applies to the ease of cultivation, excellence and constitution, but not necessarily hardiness.



Crocus speciosus



Crocus tournefortii



Tecophilaea cyanocrocus leichtlinii



Crocus sativus

SATIVUS

The source of Saffron: gathered by collecting the tiny bright red stigmata from each flower (it takes half a million per kilo! thereby justifying the huge cost of Saffron). They need deep planting in rich soil, in a sunny position and probably need lifting and dividing with regularity to encourage flowering. Their flower production is triggered by suddenly colder nights, our maritime climate sometimes does not provide that, which makes guaranteeing one's own Saffron production a bit uncertain.

Oct 77-20 4" (10cm) £15.00 for 30

SPECIOSUS

The best autumn crocus. Dramatically effective, deep lilac to purple hues, with bright yellow anthers. Good in light shade or under deciduous shrubs, or in light grass, planted deeply. They will flower later than suggested in their first year, consequent to them having been out of the soil and dried off in this summer. Do get enough of them! Suggested planting density 15 per sq ft.

Sept/Oct 77-26 5" (12cm) £4.50 for 15 or £13.50 for 50



Crocus speciosus albus

SPECIOSUS ALBUS

All white flowered, great for a contrast amongst the others or a bright creamy white splash all on their own.

Sept/Oct 77-27 5" (12cm) £6.00 for 15

TOURNEFORTII

Large flowered in pale lavender, sometimes white. Strangely the flowers do not close in dull light or at night. Cretan in origin so they require some shelter.

Sept/Oct 77-38 5" (12cm) £8.00 for 3



Tecophilaea cyanocrocus violacea

TECOPHILAEA

Chilean bulbs from a high altitude, so one would expect them to be cold tolerant, but where they come from is relatively dry, and our winters are really too wet for them. If possible grow them under some protection (particularly from rain) and you'll be amazed by the depth of colour in the flowers. Their blue is like the dazzling displays produced by some exotic butterflies.

CYANOCROCUS LEICHTLINII

White centred with gentian blue petals.

March 128-04 5" (12cm) £10.50 for 3

CYANOCROCUS VIOLACEA

Amazingly brilliant dark blue petals.

March 128-06 5" (12cm) £10.50 for 3



Insect friendly Plants

We believe the plants where you see this symbol to be particularly beneficial to pollinating insects such as bees, butterflies, moths and hover flies.



Tropaeolum tricolor



Cypripedium Gisela



Gladiolus tristis



Hippeastrum x acramannii

TROPAEOLUM

A winter-growing form of these climbing plants, they start to grow in late September and flower in late spring. Though not hardy if they experience temperatures below about -5°C they are actually happier grown somewhere cool rather than too warm. Grow in pots with something to climb up and then protect during only the very coldest weather.

TRICOLOR



Exhibiting shoals of stunning red, black and yellow flowers that last ages in flower. A climber that starts into growth very early in the autumn so early ordering is a must. One of the most spectacular plants that we sell, and a favourite of mine.

Spring climbing up to 4' (120cm)
47-06 £4.50 or £12.00 for 3

GLADIOLUS

TRISTIS

Native to South Africa, but sometimes not quite hardy here. A very special winter growing Gladiolus with a wonderful scent in the evenings. It really needs a sheltered site, providing protection from temperatures lower than about -5°C as they are in leaf through January and February. The apple white flowers open progressively up the long rush-like stems and produce a generous seed set. Picture shows Lunaria Chedglow in the background.

April/May
88-15

3' (90cm)
£15.00 for 3

CYPRIPEDIUM

GISELA

Perfect in spring light and summer shade in fertile soil. Hardy orchids are now becoming more widely available and our stocks of these are very good. Some of these divisions will produce several flower spikes in their first spring. They do not need cossetting; they are hardy and in fact they need a cold spell to form their flowers. The price has remained the same this year as our stocks are good, grab a bargain. More growing instructions on the website.

April/May
64-07

18" (45cm)
£15.00 or £40.00 for 3

HIPPEASTRUM

X ACRAMANNII



The spelling of acramannii is in some doubt, could it be ackermannii? Having been shown a private greenhouse full of these bulbs in flower many years ago near Taunton and admired them hugely (only later to find that the owner had passed away and his greenhouse had been demolished shortly afterward) it was much later that I was offered a stock from the Isle of Man and jumped at the second opportunity. These multiply well under unheated glass for us, however reading about them I find that others suggest that they are harder than one anticipates, confirmed by letters from much more northern growers. They are early autumn flowering in red and green and are in leaf all winter, more dormant in summer. Very limited numbers available this year.

Sept
56-14

18" (45cm)
£13.00



Narcissus cyclamineus



Lilium candidum



Cyclamen hederifolium Silver Leaf



Narcissus Paperwhite Ziva



Cyclamen hederifolium

The plants in the next 4 family entries can be included on either a Late Summer or an Autumn order form. If you order them alone they will be sent as Late Summer items but ordering them with anything else their 'delivery season' will be determined by what else you order. They would all benefit from earlier planting if possible.

NARCISSUS

Also see the main Autumn Catalogue pages 19-23 for the main listing. These either need early planting (N. cyclamineus) or could provide a very early indoor display from bulbs potted early (Ziva).

CYCLAMINEUS



An iconic small species, one that is much loved and sought after by many, but they rarely do well in warm, dry, limey soils. Neutral to acid soils suit them better, moist in spring and more shaded in summer. Grow them where they will be happy and seed about.

March 113-179 **5" (12cm)** £3.50

PAPERWHITE ZIVA

Early to flower from being forced; we reckon on about eight to ten weeks to bloom from potting, so work your potting date out from when you want them in flower. White flowered and multi-headed, with a huge room filling perfume. Grow them in good light and at cool temperatures without freezing so that they don't get too tall, only bringing them in to admire at room temperatures for their final flourish. Not reliably hardy.

Dec/Jan 113-152 **15" (38cm)** £8.50 for 5 or £10.50 for 7

LILIUM

CANDIDUM

A lily that is better started off early, even in October some are beginning to show their leaves. Inevitably the first orders get the pick of the crop, so ordering from this section has its benefits. See page 50 of the Autumn Catalogue for more details.

June 107-114 **36" (90cm)** £6.50 or £18.00 for 3

CYCLAMEN

These are all hardy, tough and perennial and once established will seed about. If you order and plant them early these Cyclamen will arrive dormant and ready to pop in and awake in their new circumstances. Ordering them from the Autumn section, means that there will probably be some growth visible on them. These are all from seed, raised in the UK.

AUTUMN

FLOWERING FORMS

HEDERIFOLIUM



These tubers may not have flowered last autumn so may be pink or white (though pink will dominate). The petals sweep up and away from the flower and in the spring (and for much of the year after) the ground will be carpeted in their ivy-leaf shaped leaves.

51-107 £14.00 for 5

HEDERIFOLIUM SILVER LEAF

The completely ghostly-silver foliage effect is outstanding, literally.

51-132 £13.00 for 3

Flowering time	Flowering height
Item Code	Price



Cyclamen coum



Cyclamen coum Dark Pink



Cyclamen repandum



Iris Mary Barnard



Cyclamen coum album



Cyclamen coum Roseum



Iris Marondera

SPRING FLOWERING FORMS

COUM



In their first or second flowering season these were not graded for colour in the spring so may be white or pink flowered but will be generally smaller in size than the colour selected forms of C. coum below which are all a year older.

51-116 £15.00 for 5

COUM ALBUM

White flowered, but even the white ones have a dark pink 'nose'.

51-118 £14.00 for 3

COUM DARK PINK

Tubers that have been selected for their dark pink flowers.

51-131 £14.00 for 3

COUM ROSEUM

Graded for flower colour in the spring so these are larger tubered and all will show pale pink flowers with the characteristically darker 'nose'.

51-117 £14.00 for 3

COUM SILVER LEAF

The rounded leaves are largely silvery patterned so a few tubers planted amongst others with more green leaves increases the variety of the green tapestry, their flowers are mostly pink.

51-119 £16.50 for 3



Cyclamen coum Silver Leaf

REPANDUM

Better in more sheltered conditions and certainly needing more shade and leaf mould in the soil where they need to be planted more deeply. Only properly hardy in the south, though special circumstances may affect that generalisation, small bulbs which need careful handling - I feel that I am using too many caveats! The positives are many - they provide spicily fragrant, deep carmine coloured flowers in late spring and like the others do set seed and spread where happy, as at Knightshayes in the photo.

**April/May
51-129**

£15.00 for 3

IRIS UNGUICULARIS (STYLOSA)

GAP Images

A firm favourite for the winter garden. They need a sunny site and are often found growing in rubble right up against the house wall or in very poor soils, but they will perform even better if the growing conditions are not too harsh. Avoid the inclination to shear off the untidy foliage in the summer, instead rake out some of the dead leaves in the early autumn and give the plant some water and a liquid feed at the same time. It is then that they make their new roots and are initiating their flower buds so that should result in more flowers in the following winter. New divisions need careful planting and firming in, regular watering till established and possibly some protection in their first winter.

MARONDERA

Bigger flowered than the 'ordinary' unguicularis and slightly darker, this is a strain that goes back to a garden in the town of that name in Zimbabwe. It is as good and tough as all the others, and goes back a long way

**Feb/March
102-13**

**15" (38cm)
£7.50**

MARY BARNARD



The darkest of them all and a glossy marvel in the winter. Tissue-like velvety purple blue flowers with white and golden markings on the falls, the foliage shorter and darker than the other forms. Discovered by E.B. Anderson near Algiers in 1962.

**Feb/March
102-05**

**15" (38cm)
£8.50**

WALTER BUTT

Palest of pale ice blues with some fine purple veining, drawing one's attention to the fact that they are not white. Longer leaved and with more upright, paler, foliage. The first form to flower with the largest flowers and the most scented too.

**Nov/Feb
102-06**

**18" (45cm)
£7.50**



Plants we list which have received the RHS Commendation 'Award of Garden Merit' are now tagged with the trophy symbol. Space does not allow us to add the hardiness rating - please be aware the award applies to the ease of cultivation, excellence and constitution, but not necessarily hardiness.



UNGUICULARIS

The species plant with pale mauve flowers, the standards slightly paler and more silvery. A tough survivor even in poor soil conditions.

Feb/March	15" (38cm)
102-04	£7.00

UNGUICULARIS ALBA.

Narrower petalled with all white flowered except for the yellow markings at the throat. Reportedly slightly less tough than its sisters but they have grown apace despite the cold winter.

Feb/Mar	15" (38cm)
102-11	£8.00



Order for Late Summer Despatch 2020

Bulbs that need Early Planting this Autumn

Please specify plants and costs here, and complete the other side of the form.

[illegible]

subtotal

carriage

total

The normal postage and packing costs on any Late Summer Order is £4.95 (UK Mainland only)
Orders over £100 are sent free of P&P

The example at the top shows the information we need – in particular, the **item code** given at the bottom left of the plant's entry.

If possible, specify acceptable alternatives in case some of your choices are not available.

If you want your order to be sent as a gift to someone else (invoice to you), tick the box and put the recipient's name and address and postcode in the space provided in Other Delivery Instructions.

Is this an order for collection? ☐

Is it a gift? ☐

Please record personal and payment details overleaf

Order for Late Summer Despatch 2020

Bulbs that need Early Planting this Autumn

GDPR

The new rules on Data Protection that came into force in May 2018 apply to everyone storing and using your personal data.

We collect information about you when you register with us or place an order for products or services. We also collect information when you voluntarily complete customer surveys, provide feedback and participate in competitions. Website usage information is collected using cookies.

Although we take payment details when you place an order, these details are held by our payment processor WorldPay and only an encrypted "token" is sent back to Avon Bulbs. The card number data remains securely stored on WorldPay's PCI Level 1 Compliant servers. We only have access to the last four digits of your payment card for identification purposes. Avon Bulbs has a formal agreement with WorldPay to accept payments on our behalf. Any information that is submitted to WorldPay is used solely for the purpose of completing your transaction with Avon Bulbs.

We collect information about you to process your order, manage your account and to enable us to contact you if there is a problem with your order or delivery. We use your information collected from the website to personalise your repeat visits to our website. In processing your order, we will share your name and address and email address/ telephone number with Royal Mail and DPD Local to facilitate delivery. These companies are also GDPR compliant.

We will hold Information about services or products that we have provided to you in the past, including the service(s) or product(s) provided, when and where, the amount that you paid, billing address and where the item was sent (if applicable), and any other information required to process a transaction. We will retain your information for as long as is required to provide you with a good service whenever you contact us regarding past orders.

Once you are a customer or have requested an Avon Bulbs catalogue, we will send you further catalogues in the post from time to time, which is allowed under the GDPR regulations as a 'legitimate interest'. You can, of course, contact us and request that we stop sending you direct mail. If you are a new customer and give your permission or if you subscribe to (and thereby give your consent to receive) our newsletter via the Avon Bulbs website, we may occasionally email you about our products and services that we think may be of interest to you. You can unsubscribe to these marketing emails by following the UNSUBSCRIBE link at the bottom of each email. If you have consented to receive marketing information, you may opt out at any time by contacting us. You have the right at any time to stop us from contacting you for marketing purposes. You can now update your mailing preferences through your website account.



Office use only:	
Date received:	Order No:

**Avon Bulbs Ltd • Burnt House Farm • Mid Lambrook
South Petherton • Somerset • TA13 5HE**

Title: Mr ☐ Mrs ☐ Miss ☐ Other _____

Name: _____

House name/number: _____

Street: _____

Town: _____

County: _____

Country: _____ Postcode _____

Contact number: _____

Tel: _____ Mob: _____

Email address: _____

Other delivery instructions/safeplace leaving: _____

Please complete these questions (We now need your permission to stay in touch, except with regard to this order)

By Post: Are you happy to receive our printed catalogues in the future? ☐ Yes ☐ No

By Email: Do you wish to receive occasional emailed Newsletter from us along with any Special Offers? ☐ Yes ☐ No

(We will not sell or pass on any contact details except to manage your order - see GDPR information across)

Payment:

Orders are not accepted without payment except by prior agreement.
Please include payment or please charge my Visa/Mastercard account.

Cheque enclosed ☐ Yes, value £ _____, or

Card No. • • •

Card expiry date /

Security code (last three digits on reverse of card)

Signature _____

AUTUMN 2020

Plants and Bulbs to plant in the Autumn, mostly to flower the following spring. Despatch of these items begins in early to mid September with the intention of sending everything on your order in one parcel. For further information see the 'Ordering from Avon Bulbs' section at the back.

You may include plants and bulbs from the last four 'families' in the Late Summer section to be sent with those that follow as Autumn items.



Crocus chrysanthus Ard Schenk



Crocus chrysanthus Dorothy



Crocus imperati de Jager



Crocus chrysanthus Blue Pearl



Crocus chrysanthus Cream Beauty



Crocus chrysanthus Prins Claus



Crocus minimus Spring Beauty

CROCUS (SPRING FLOWERING)

The *C. tommasinianus* forms are perfect for planting in light grass or borders, self-sowing and increasing where happy and potentially getting everywhere. The bees love them and their opening is always a certain sign of spring arriving. The hybrid forms of the species *C. chrysanthus* in particular have been raised for garden use but need more particular situations than do the 'tommies'. They are palatable to mice and squirrels as are some other small carbohydrate rich bulbs. Mesh baskets (as offered on the back cover of this catalogue) are a great help (with the addition of a home-made wire lid). These buried containers mostly thwart those opportunistic raiders. The bigger and later flowering *C. vernus* or 'Dutch' forms of Crocus are much bigger bulbed (so can be planted more deeply) and seem to both persist better and are less affected by rodents.

CHRYSANTHUS ARD SCHENK

Very early flowering with pure white petals marked by a yellow throat inside. Glistening in the early sunlight.

78-72 £4.40 for 20 or £10.00 for 50

CHRYSANTHUS BLUE PEARL

A lovely goblet shaped flower with a soft lavender-blue exterior, pale silvery blue inside, and bronzing at the base.

78-12 £4.40 for 20 or £10.00 for 50

CHRYSANTHUS CREAM BEAUTY

Elegant, with pale-cream petals brushed with charcoal on the reverse and bright orange stigmas when open wide in the sun.

78-14 £4.40 for 20 or £10.00 for 50

CHRYSANTHUS DOROTHY

Bronzy yellow throughout, the open flowers mirroring the sun with a shiny sheen. Bright and cheery.

78-69 £4.40 for 20 or £10.00 for 50

CHRYSANTHUS PRINS CLAUS

A slightly bigger two-tone flower with ivory white within and a smoky purple blue reverse to the petal. Grouped together each one seems to frame their neighbour and so they show themselves off magically.

78-70 £4.40 for 20 or £10.00 for 50

IMPERATI DE JAGER

Flowering in the very early spring when the delicacy of these flowers is more than welcome, the outer petals are biscuit buff with purple stripes, the inside lilac to purple. From Western Italy and needing a well drained sunny rockery.

**Jan 5" (12cm)
78-73 £8.50 for 3**

MINIMUS SPRING BEAUTY

Lovely lilac petals open wide in the sun, but notice their backs, richly feathered along their length on a much paler background they really enhance that lilac.

78-59 £4.40 for 20 or £10.00 for 50

Flowering time Item Code	Flowering height Price
-----------------------------	---------------------------



Crocus tommasinianus Ruby Giant



Crocus tommasinianus Yalta



Crocus Harry Hay



Crocus Flower Record



Crocus tommasinianus Whitewell Purple



Crocus Golden Yellow



Crocus Jeanne D'Arc

TOMMASINIANUS RUBY GIANT

Deep pinkish-silvery purple flowered with contrasting yellow anthers. Excellent for naturalising and an ideal accompaniment to the early dwarf daffodils and to follow the Cyclamen corm. Don't be deceived by the deceptive naming, they are neither Ruby nor Giant, just 'chubbier' and darker than Whitewell Purple below.

78-44 £4.00 for 20, £9.50 for 50 or £17.50 for 100

TOMMASINIANUS WHITEWELL PURPLE

Free-flowering with silvery mauve-pink flowers and bright yellow anthers, this form is a little finer and paler in hue. They are ideal to plant with the intention of allowing them to seed about and naturalise. They don't last long in blazing March sunshine so try them in dappled shade. Don't mow till the leaves have gone if planted in grass and, if you remember, look out for the seed-heads at soil level in June.

78-45 £4.00 for 20, £9.50 for 50 or £17.50 for 100

TOMMASINIANUS YALTA

A hybrid between a 'tommy' and a large hybrid, perhaps C. vernus Vanguard so a bit larger and slightly later. Some left over bulbs have survived in some rough grass under a birch and done quite well here so come recommended, our heavier soil generally does not suit the smaller crocus, though the 'tommies' do brilliantly. Alternating deep purple and silvery backed petals contrast nicely.

78-64 £5.00 for 10 or £11.50 for 25

(VERNUS) HEUFFELIANUS HARRY HAY

A purple tipped selection of a species that grows in the mountain chains of eastern Europe, described in the March 2020 edition of the RHS Plant Review and named after a generous and great plantsman from near Reigate. It has been found to be robust in cultivation but is still only available in limited numbers.

78-74 £8.00 for 3

CROCUS VERNUS 'DUTCH' HYBRIDS

Selected over the centuries, originally from C. vernus these are useful for planting in grassed areas to provide an early spring show (though in February and March the grass will hardly be growing) and being bigger bulbed they can be planted more deeply and would cope with rougher grass cover than lawn grasses. Each corm produces multiple flowers. Flowering into the early Daffodil season they can be an effective contrast to the sea of yellow in the March garden. Plant them 4-6" (12-15cm) apart, or roughly 7- 12 per square foot. They do not quite all flower together (which is a benefit) so choose a few varieties to provide a slightly greater spread of flowering. Late February and early March flowering 5" (12cm) tall.

Brighten up Spring with our **Crocus Collection** on page 58

FLOWER RECORD

The deepest purple form, providing that darker contrast in a mixed planting.

78-71 £6.80 for 15, £12.00 for 30 or £18.00 for 50

GOLDEN YELLOW

Bright golden yellow flowers. Either use them alone or in combination with the purple forms (it flowers fractionally earlier). It has been found not to be a true C. vernus form at all but a triploid hybrid between C. vernus and C. angustifolius.

78-52 £6.80 for 15, £12.00 for 30 or £18.00 for 50

JEANNE D'ARC

A superb goblet shaped white crocus (occasionally with purple flecking) with strong stems. Great planted alone or else supporting a mix of other colours. But also nice with late snowdrops or as a foil to any of the Greigii tulips which flower at the same time. One could try a combination of your own of any of the 'Dutch' crocus and any Greigii tulip in pots?

78-51 £6.80 for 15, £12.00 for 30 or £18.00 for 50



Crocus Pickwick



Iris Lady Beatrix Stanley



Iris Katharine Hodgkin



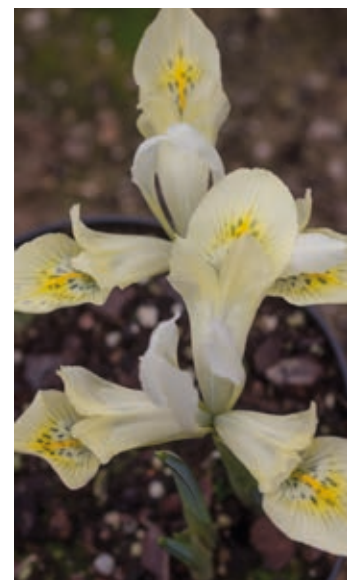
Crocus Queen of the Blues



Crocus Remembrance



Iris Harmony



Iris Katharine's Gold

PICKWICK

Strongly striped and feathered in violet over a white background. A larger flowered and vigorous crocus, generally with several flowers per corm.

78-53 £6.80 for 15, £12.00 for 30 or £18.00 for 50

QUEEN OF THE BLUES

Lavender blue, with a whiff of purple in some lights but with an incredible depth of colour and slightly shorter stemmed.

78-68 £6.80 for 15, £12.00 for 30 or £18.00 for 50

REMEMBRANCE

The deep purple blue, and again slightly shorter stemmed. Brought back into our list by popular demand.

78-63 £6.80 for 15, £12.00 for 30 or £18.00 for 50

IRIS - DWARF (RETICULATA)

These are derived from plants native to the Middle East and do best in well drained conditions with a warm dry summer rest. In UK conditions with our usual, but these days more infrequent, summer rain this is not easy to achieve so they sometimes do not do well year on year. It helps to plant them deeply 5" (12cm). The best situation would be a raised bed in the sun with well drained soil conditions. There you'll be able to admire them up close and smell the scented ones. 15 bulbs will nicely fill a 9" (20cm) planter or pot filled with sharply draining compost for an early spring treat.

HISTRIODES LADY BEATRIX STANLEY

A velvety pale blue flowered form with pale flecking on the lips and with a yellow stripe down the length of the falls, scented of violets. Flowering before the leaves extend so these are not too evident at flowering time.

Feb/March 6" (15cm)
101-22 £5.00 for 5 or £8.50 for 10

HARMONY

Flowering with amazingly intense gentian blue flowers, only marked with a small yellow and white crest on the falls. Our most popular of all the forms.

Feb/March 6" (15cm)
101-11 £4.00 for 15 or £6.25 for 25

KATHARINE HODGKIN

An utterly distinct hybrid raised by EB Anderson in the 1960s. Predominantly yellow with blue and sea-green veining and markings over the wide petals. Probably the most persistent and perennial form when planted in a rich, gritty soil in a sunny site.

Feb/March 6" (15cm)
101-07 £3.00 for 5 or £5.00 for 10

KATHARINE'S GOLD

Creamy coloured predominantly with flecks of darker yellow and blue on the falls. Visually quite startling so early in the year.

Feb/March 6" (15cm)
101-24 £6.30 for 5



Insect friendly Plants

We believe the plants where you see this symbol to be particularly beneficial to pollinating insects such as bees, butterflies, moths and hover flies.



Iris Pauline



Iris Pixie



Iris Purple Hill

PAULINE

Narrower petalled with dark velvety purple flowers with bright white highlights on the falls. Mid-season flowering.

Feb/March 6" (15cm)
101-13 £5.00 for 15 or £7.50 for 25

PIXIE

Wide petalled in the deepest of blue, not really purple, and equally scented.

Feb/March 6" (15cm)
101-23 £4.00 for 15 or £6.25 for 25

PURPLE HILL

Purple petalled and now the closest form that one can obtain to I. George which was for years the most popular purple form but is now not available.

Feb/March 6" (15cm)
101-26 £4.90 for 10 or £6.80 for 15

SPOT ON

Raised by Alan McMurtrie in Canada this hybrid is evidently the result of crossing I. reticulata Pauline x I. reticulata bakeriana. It appears and grows much like the others but is slightly smaller though the white throat markings are distinct and outstanding surrounded as they are by the rich purples.

Feb/March 6" (15cm)
101-25 £4.00 for 5 or £7.20 for 10



Iris Spot On



Chionodoxa luciliae



Chionodoxa forbesii Pink Giant

The spring bulbs generally exhibit a huge range of bold shapes and strong colours. As a result if one does not follow a colour theme or stick to a limited palette one can find that the whole effect can look a bit haphazard. A way to help with this is to use a range of the 'little blue bulbs' to create a more unifying backdrop. This ties the louder colours together and provides a steady consistency. Any of the Chionodoxa, Scilla, Anemone and Muscari which follow are the bulbs that I have in mind and perform this role, but you could use other non bulbous plants as well such as Brunnera or Myosotis (Forget-me-not).

CHIONODOXA

Our 'friends' - the nomenclature police have officially merged the Chionodoxas into the Scilla family. However on such matters we are slow adopters although the 'new' seasonal ordering puts them together here !

LUCILIAE



Multifunctional small bulbs, they can go into your beds of perennials or be allowed to seed about in rock gardens in the sun or part shade, where they combine well with the daffodils, grape hyacinths, crocuses and other small spring bulbs. They can also be naturalized in grass (though mowing too early and too short needs to be avoided). Brilliant blue with white centres. Buy lots your planting densities need to be generous, though they will seed about in time. You'll initially need about 30-40 per square ft.

Feb/March 4" (10cm)
72-04 £4.00 for 20 or £9.00 for 50

FORBESII PINK GIANT

With a spike of very pretty pale pink flowers, this is a taller and slightly earlier flowering alternative to the more common blue shades. Being taller it needs to receive more light to avoid it getting too leggy and flopping over. Plant about 2" - 3" (5-8cm) apart, or 15 per square foot.

Feb/March 5" (12cm)
72-10 £3.00 for 10 or £6.80 for 25

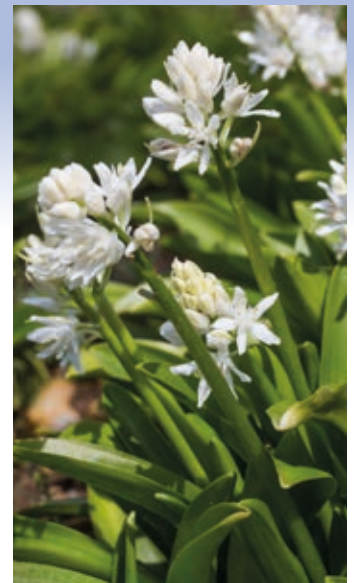
Flowering time	Flowering height
Item Code	Price



Chionodoxa forbesii Blue Giant



Scilla bifolia rosea



Scilla lilio-hyacinthus alba



Scilla bifolia



Scilla bifolia alba



Scilla lilio-hyacinthus



Scilla mischtschenkoana

FORBESII BLUE GIANT

Larger flowered than the C. luciliae above with a more noticeable central white throat. The photo was taken of them in a pot of tulips that were yet to flower and the C. Blue Giant were flowering their socks off, providing a very good early show.

March/April 6" (15cm)
72-11 £4.50 for 10 or £10.25 for 25

SCILLA

The smaller Scillas, often sold in larger multiples, are not really used as star stand-alone performers, but they are the unmissable and necessary chorus, supporting the prima donnas of the bulb world so you shouldn't be without them. Their preferred situations do vary widely.

BIFOLIA



An easy dwarf species with starry purple-blue flowers and waxy leaves. Naturalises under shrubs or in light grass in summer shade where the massed heads really create an early purple haze, flowering with the anemones and early daffodils. Small bulbs that you need to be generous with, plant them 2-3" (5-8 cm) apart, 15 per square foot.

Feb/Mar 6" (15cm)
125-05 £3.20 for 10, £7.50 for 25,
or £13.50 for 50

BIFOLIA ALBA

The white flowered form.

Feb/Mar 6" (15cm)
125-04 £3.80 for 10, £8.80 for 25,
or £16.50 for 50

BIFOLIA ROSEA

The pale pink flowered form

Feb/Mar 6" (15cm)
125-06 £3.80 for 10, £8.80 for 25,
or £16.50 for 50

LILIO-HYACINTHUS

Broad and tidy leaved, with pretty, delicate racemes of soft pale blue. Neat looking mounds of foliage and a joy when in flower. The bulbs are formed of loose lily-like scales which dislike being dried out (hence the name). Clump forming and best in some shade. A great addition to the early spring tapestry. Do please order these early, they 'move' better in September rather than too far into October.

Mar/April 8" (20 cm)
125-28 £10.00 for 3

LILIO-HYACINTHUS ALBA

This pretty form has all the attributes of the blue but the flowers are white and the leaves are slightly paler than those of the blue flowered form above. Again best grown in some shade.

Mar/April 8" (20 cm)
125-29 £10.00 for 3

MISCHTSCHENKOANA (TUBERGENIANA)



The earliest pale-blue gem. They seem to ignore the winter cold and emerge especially early to flower at the same time as the Cyclamen coum and the winter aconites - far earlier than other similar plants. Very hardy and well suited to the rockery or a border and under deciduous shrubs

Feb 4" (10cm)
125-17 £3.50 for 5 or £9.50 for 15



Scilla siberica Spring Beauty

SIBERICA SPRING BEAUTY

Bone hardy, these hail from the Black Sea area. The Prussian-blue flowers piercing through the cold ground in advance of their leaves, especially happy on sandy soils in summer shade.

Mar/April 6" (15cm)
125-14 £6.50 for 10 or £14.60 for 25

For Scilla peruviana - see the May flowering section, page 40



Anemone apennina



Anemone blanda Blue



Anemone White Splendour



Anemone nemorosa



Anemone Pink Star



Anemone nemorosa bracteata

ANEMONE

The Anemones mark that moment when the weather is on the turn for the better and the stronger light of spring is accentuated by the shiny wet foliage resulting from scudding showers and windy conditions. This is just what they love. They open wide in the sunshine though if the light is only dappled by dint of still bare branches on the trees they won't mind.

However they are not all alike even when 'resting': the bulbous (*A. blanda*) forms come as hard, wizened corms, which need an overnight soak before planting and will take a long hot summer in their stride. The rhizomatous forms (*A. apennina* and *A. nemorosa*) need a cooler, shady (but also dry) rest after they have flowered, so they prefer more shaded, woodland-like conditions and, due to hating exposure to air, the rhizomes will be damp packed in coir when despatched by us.

APENNINA



An excellent and very pretty plant, I wish it were more easily produced as I think it more attractive than *A. blanda* in British conditions, but it is not a similarly commercialised plant. In white or shades of blue with many deeply cut petals on flowers held well above soft mounds of leaves. Ideal under big deciduous trees following snowdrops and flowering with the early daffodils with which the colours combine very naturally. Plant the small stick-like rhizomes in small groups 6" (15cm) apart where they will thereafter seed about (I think our strimming activities have greatly increased their spread). Home grown and dug-to-order from under trees here, the damp packed rhizomes are inevitably rather variable in size.

**March/April
57-11**

**8" (20cm)
£6.50 for 3**

BLANDA BLUE

Low growing in shades of blue, that unconformity adding to their attractiveness, with flowers which shimmer close to the ground, unaffected by the March winds and shaking off the rain. Easy in any summer shaded spot where the more angled light (and moisture) of spring penetrate through.

**March
57-07**

**4" (10cm)
£2.40 for 10, £5.50 for 25
or £10.00 for 50**

BLANDA PINK STAR

Pale pink flowered plants of the same stature.

**March
57-08**

**4" (10cm)
£3.50 for 5**

BLANDA WHITE SPLENDOUR

Gleaming white petals surround a hub of golden stamens, which when ruffled by the wind, show off their pink tinged backs. Opening widely in direct sunshine, their flowering is a sure sign that spring has arrived. Compared to the blue forms slightly warmer soils and more direct light suit them better, in too much shade they get rather leggy. They grow from larger hard irregular corms, which you will receive whole - many providers sell these cut into smaller pieces.

**March
57-12**

**5" (12cm)
£5.00 for 10, £11.50 for 25
or £22.00 for 50**

NEMOROSA

The wild wood anemone. The simplest looking low white flowers which derive from stick-like rhizomes. For woodland situations, in shade with leafmold rich soils. As with many 'wild' plants they often take a while to settle in and take off.

**April
57-20**

**4" (10cm)
£4.00 for 5**

NEMOROSA BRACTEATA

Double petalled in white with green tinges to the outermost ones. Like them all quite slow to get going but for a brief time in April a joy.

**April
57-37**

**4" (10cm)
£5.00 for 5**



Plants we list which have received the RHS Commendation 'Award of Garden Merit' are now tagged with the trophy symbol. Space does not allow us to add the hardiness rating - please be aware the award applies to the ease of cultivation, excellence and constitution, but not necessarily hardiness.



Anemone nemorosa Stammheim



Muscari azureum



Muscari White Magic



Anemone nemorosa Virescens



Anemone ranunculoides



Muscari aucheri Blue Magic



Muscari Baby's Breath

NEMOROSA STAMMHEIM

Many bracteate petals in white and green and seemingly feathery flowered with bronzing in the petals as they fade.

April 4" (10cm)
57-30 £5.50 for 3

NEMOROSA VIRESCENS

For us the most productive of all the Anemone nemorosa forms. These do not have flowers in the conventional sense, but frothy green heads full of bracts that last much longer than flowers might.

April 4" (10cm)
57-17 £5.00 for 3

RANUNCULOIDES

A European native with bright yellow petalled flowers, the tubers underground are thicker and less stick-like than those of Anemone nemorosa. Easy in light spring shade conditions amongst the other March and April flowering woodlanders.

April 4" (10cm)
57-31 £5.50 for 3

MUSCARI

The 'Grape Hyacinths', and as the name implies some are heavily scented. All do well in the drier, sunny conditions provided under deciduous shrubs in the early spring, with summer shade later in the year. Part of the group of 'Little Blue Jobs', that create the backdrop and provide the 'chorus' to the spring display. M. Golden Fragrance may be better in warmer and more protected situations. The common and weedy 'ordinary' Grape Hyacinth (M. armeniacum) is undoubtedly best avoided - it gives the well behaved Muscari a bad name. As a guide plant them 4" (10cm) deep and 2" (5cm) apart.

AZUREUM

Probably the easiest to grow and not at all invasive. Tightly packed powder-blue flowers, flared open at their tips, emerging initially cone shaped but becoming more rounded as more flowers open. For a well-drained sink or rockery or in light soils at the front of a spring border.

March 5" (12cm)
111-15 £3.50 for 10 or £8.00 for 25

AUCHERI BLUE MAGIC

Bright blue with white rims to the mature flowers. These selected colour forms are derived from the species which is native to alpine turf in Turkey, they will not be invasive here.

April 5" (12cm)
111-20 £4.30 for 10 or £9.75 for 25

AUCHERI WHITE MAGIC

The aucheri forms are less vigorous, (and by implication not invasive) so suited to smaller gardens. This selection has attractive pale green flower buds opening white, initially quite pointed but rounded when in full flower.

April 5" (12cm)
111-14 £6.50 for 10 or £15.00 for 25

BABY'S BREATH (JENNY ROBINSON)

This form of M. neglectum was found by Jenny Robinson, the then holder of the National Collection of Muscari in Cyprus. Opening from lime green buds the flowers are in the palest of blues with a wonderful scent.

April 6" (15cm)
111-23 £3.50 for 10 or £8.00 for 25



Muscari botryoides Album



Muscari Valerie Finnis



Erythronium dens canis



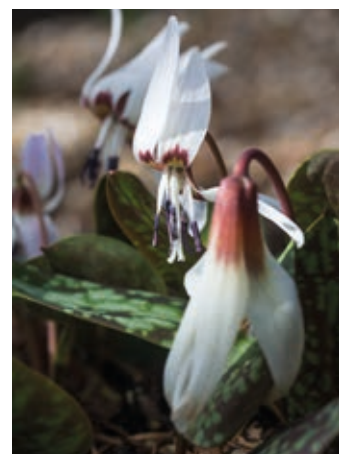
Muscari macrocarpum
Golden Fragrance



Hacquetia epipactis



Erythronium dens canis Old Aberdeen



Erythronium dens canis Snowflake

BOTRYOIDES ALBUM

A smaller form with pale leaves, certainly no thug, with neat strings of little pearls strung on pale stems. Scented.

April 6" (15cm)
111-06 £4.50 for 10 or £10.25 for 25

MACROCARPUM GOLDEN FRAGRANCE

A form of M. macrocarpum, which was evidently selected from the species for its cold tolerance. Grow this where you can enjoy its heavenly banana-like perfume, growing in a sunny sheltered spot where it gets dry in the summer whilst they have a rest. These have thick and fleshy roots to anchor them into difficult niches. Violet flowers, turning yellow as they age.

April 7" (18cm)
111-10 £5.50 for 3

VALERIE FINNIS

Tightly packed ropes of scented powder blue flowers, best grown in open sunny conditions. It arose in Valerie Finnis' garden in Northamptonshire (by then she was Lady Scott).

March 7" (18cm)
111-18 £5.50 for 10 or £13.00 for 25

HACQUETIA

An unusual European native in the Carrot family.

EPIPACTIS

Flowering fairly early in the year with yellow starry flowers with all green bracts that last longer still. Always low to the ground they are deciduous but perfectly hardy. A shade lover increasing slowly. Divisions.

Feb-March 4" (10cm)
20-01 £5.50

ERYTHRONIUM

The Dog's Tooth Violet is the only European form (that common name referring to the shape of the bulb); the others are all American species or hybrids where the common name for them in America is the Trout Lily (due to the markings on the leaves). They grow best where they have cool humus rich soil conditions in the spring, usually grown in dappled shade, with a drier resting phase in what will be deeper shade in the summer. They all have interesting leaves and look great with Dicentra, Trilliums, Epimedium and the wood Anemones. Knightshayes Court, or The Garden House at Buckland Monachorum, both have good displays.

DENS CANIS

The European Dogs Tooth Violet with magically mottled leaves with brown and purple markings. The flowers are pale pink through to lilac or purple. They benefit from good spring light but with shade from about April. Plant them 3-4" (7-10cm) apart.

March 4" (10cm)
84-08 £5.50 for 3

DENS CANIS OLD ABERDEEN

Noted for their exceptionally dark leaf markings the flowers are also more deeply coloured than the standard E. dens canis. First named (I believe) by Carol Scott whom I met and stayed with 30 plus years ago near Glasgow. They should increase quite rapidly but E. dens canis is never in flower for long, so the great foliage is a strong reason to grow these.

March 4" (10cm)
84-09 £4.00 or £10.50 for 3

DENS CANIS SNOWFLAKE

A white flowered selection, worth a closer look when in flower (though this can be awkward as they are very close to the ground) in order to admire the extraordinary mauve-purple stamens.

March 4" (10cm)
84-11 £4.50



Erythronium Pagoda



Erythronium revolutum



Erythronium revolutum Knightshayes Pink

PAGODA

A more vigorous hybrid first discovered in the late 19th Century, it is a bigger plant altogether, with creamy yellow flowers. They are easier to grow than any of the others and one starts with a big finger sized tuber. Ideally planted in some shelter from spring gales (the large leaves tend to crack in strong winds) and ideally in humus rich soils where they will clump up. Plant 7" to 9" (16-20cm) apart.

April 84-17 12" (30cm)
£4.50 for 3 or £9.50 for 7

REVOLUTUM

The 'wild' pink flowered Erythronium, originally from the western seaboard of North America, right through from California to Vancouver now a welcome highlight in woodland gardens here. More subtle and refined than E. Pagoda, but if you can grow that one then these are a definite possibility. They seed around quite vigorously and mix in very naturally with wood anemones, Anemone apennina, and all those low growing gems of April. A cool April is a blessing, otherwise they are too quickly over. Some will be marked with lovely brown flecks on the leaves.

April 84-21 10" (25cm)
£12.00 for 3



REVOLUTUM KNIGHTSHAYES PINK

Named after the garden in which these abound in Devon, this strain has even more heavily marked leaves with pale pink flowers, but do handle the tubers carefully, they are long and brittle.

April 84-13 10" (25cm)
£5.50 or £15.00 for 3

TUOLUMNENSE

Early flowering plants with larger bright plain green leaves and bright yellow flowers. A native of the Sierra Nevada in California they are perfectly hardy in the UK. Pagoda is a hybrid deriving from this species, it is later and paler flowered, has more marked leaves, and is quicker to increase.

April 84-24 8" (20cm)
£4.00



Erythronium tuolumnense



Erythronium White Beauty

WHITE BEAUTY

Probably the best Erythronium in Britain for more formal small gardens and a favourite: if you have visited Knightshayes in Devon in early April you'll know why. A very neat and compact hybrid with mottled leaves and creamy white flowers, often multi-stemmed on established plants. The whole plant is nicely proportioned. Pamper them with deep leaf mould rich soils in the summer shade of trees or shrubs. Plant 5" (12cm) apart.

April 84-15 10" (25cm)
£6.00 or £16.00 for 3



Hyacinthus Carnegie



Hyacinthus Delft Blue

HYACINTHUS

The Hyacinths below can be potted for use in the house, where they will flower in March and look equally magnificent in pots or can be planted directly into the garden to flower in March and April. All are tremendously fragrant. They prefer very well drained and sunny situations, reaching a height of 12" (30cm). We are not listing the 'Prepared' hyacinths now, their supply has been unsatisfactory in the past few years.

CARNEGIE

Dense glossy white flowered spikes with a hint of yellow in the buds before they open.

86-12 £4.00 for 3 or £9.00 for 7

DELFT BLUE

Compact spikes of purple- blue with a darker stem.

86-11 £4.00 for 3 or £9.00 for 7





Hyacinthus Gipsy Queen



Hyacinthus Gloria Mundi



Hyacinthus multiflora Anastasia



Ipheion Alberto Castillo



Hyacinthus Woodstock



Hyacinthus multiflora white



Ipheion uniflorum Charlotte Bishop

GIPSY QUEEN



Neither yellow nor salmon, but not pink either. Quite a refreshing colour in the spring when there is likely to be so much yellow about.

86-36 £4.00 for 3 or £9.00 for 7

GLORIA MUNDI

You'll need to read the full story online on the website as this was a remarkable find and there follows an amazing story. White and green double petalled variety of antiquity with pink centres. Still very few bulbs and not yet super-sized.

86-37 £10.00 each

WOODSTOCK

Deep beetroot purple, one of the most dramatic. It makes a smashing twosome planted with Carnegie.

86-17 £4.00 for 3 or £9.00 for 7

MULTIFLORA ANASTASIA

The forms above are looked on as being a bit 'chunky' and soldierly by some, the multiflora forms below are more slender, less dense and more informal in appearance and maybe less dominating of the little flowers with which they bloom so early, this is the prettiest deep blue with dark stems.

86-20 £5.00 for 3 or £11.00 for 5

MULTIFLORA WHITE

Simply white when fully open but quite yellow in bud. Slighter and somehow simpler than the 'standard' orientalis forms.

86-09 £4.00 for 3 or £9.00 for 7

IPHEION

These little bulbs often start pushing up one or two stems very early with pretty star shaped flowers, but their main display is reserved for late March and April. They are easy in any reasonably well drained soils and a moderately sunny site and although the leaves can be burnt off in a heavy frost (with an associated garlic smell) they seem to recover in weeks. The named forms are better and more interesting than the species forms which are widely available but tend to be invasive (and for which reason we do not stock). The biggest bulbs of the first one are the size of a small clementine segment, but the others are much smaller.

ALBERTO CASTILLO



Vigorous, with very white starry flowers over grey-green foliage smelling of onions when crushed. Longer stemmed, which raises the flowers well above the foliage and they pick well for small posies but to prevent those longer stems from flopping you should plant them in conditions of fairly good light.

**March/April 9" (22cm)
97-09 £3.30 for 7**

UNIFLORUM CHARLOTTE BISHOP

A pretty pink flowered form, dark pink on opening, fading gracefully in the sun. In well drained soils they are vigorous and will increase.

**March/April 6" (15cm)
97-10 £3.30 for 7**



Ipheion Froyle Mill



Narcissus fernandesii var. cordubensis



Narcissus Elka



Iris bucharica

NARCISSUS (DAFFODILS)

The highlight of the April garden in a 'normal' year, though some earlier ones are often welcome and the last will flower in May. Do plant them really quite deeply with 4-6" (10-15cm) of soil over the biggest bulbs (unless told differently), where they will remain cool and moist in the spring and safe from gardening activity above them in the summer. Do not be tempted to cut back or tidy the foliage after flowering – this period of replenishment of the bulb's starchy food reserves is critical to future flowering. A liquid feed whilst the leaves are still green will benefit clumps in poorer soil, but generally feeding is unnecessary. I would suggest that you plant in groups (and particularly any that you 'naturalise') resulting in swathes of the same variety and not a jumbled crowd – the effect is generally better. Most should clump up from being planted about 4-6" (10-15cm) apart, further apart for more 'relaxed' planting.

Divisions: The number in brackets after the name represents the type of flower expressed by the divisions within the Narcissus family: 1 = trumpet, 2 = large cupped, 3 = small cupped, 4 = double flowered, 5 = triandrus forms, 6 = cyclamineus types, 7 = jonquilla forms, 8 = tazetta forms, 9 = poeticus types, 10 = bulbocodium types, 11 = split corona, 12 = miscellaneous, 13 = species and wild variants (more suitable for naturalising).

The suggested flowering month should be used as a guide only – annual variation can be great, as recent springs have shown.

The flowering height suggested is the height at which the first flowers open, the stems often extend thereafter.



Narcissus Desert Bells



Narcissus Exotic Mystery

UNIFLORUM FROYLE MILL



First selected in Hampshire which explains the name, with starry, velvety-violet flowers, similarly vigorous in sunny conditions.

March/April 6" (15cm)
97-08 £3.80 for 5

IRIS (OTHER TYPES)

BUCHARICA

Easy to grow in any sunny border or a well drained sunny site where little else seems to do well. They originate from Central Asia with bright glossy leaves, creamy white and yellow flowers over low, bright, shiny foliage.

March/April 12" (30cm)
103-09 £4.30 for 3

FERNANDESII VAR. CORDUBENSIS (13)

A small bright yellow jonquil with what I think of as a jaunty attitude. Generally with several small, gleaming, fragrant flowers on each stem and narrow grass like foliage. A raised bed in the sun is a likely requirement for it to increase happily. Naturally small bulbs.

April 10" (25cm)
113-103 £4.00 for 5 or £7.20 for 10

DESERT BELLS (7)

Multiheaded with pale yellow flowers that gradually fade to a crisp white, the trumpets fading more slowly so that at any moment one might have all the stages showing together which is nice.

April 10" (25cm)
113-35 £5.70 for 3

ELKA (1)



A perfectly proportioned pale bicoloured miniature with a relatively long cream coloured trumpet and milk white petals. It was raised by Alec Gray, a Cornish flower grower and distinguished daffodil hybridiser of the 1940s and 50s.

March/April 6" (15cm)
113-61 £4.00 for 5

EXOTIC MYSTERY (11)

Until now I have not been a great fan of the split corona group, usually with large flowers, but this is a smaller flowered form with slightly downcast heads in the most magical soft primrose which looks lovely with pale Muscari blue. They seem to last ages in flower.

April 15" (38cm)
113-20 £7.50 for 5 or £13.50 for 10



Narcissus February Gold



Narcissus Hawera



Narcissus Minnow



Narcissus More and More



Narcissus Julia Jane



Narcissus Martinette



Narcissus moschatus

FEBRUARY GOLD (6) 🏆
Dating back to 1923. Early flowering but, despite the name, only opening in late February in very mild winters. A long lasting, upright, golden yellow garden favourite with slightly swept back petals and a good stature, also good for pots or tubs.
Feb/March 12" (30cm)
113-09 £7.00 for 10 or £15.50 for 25

HAWERA (5) 🏆
Small clear lemon-yellow flowers with prominent cups and narrow deep green foliage typify this plant. It is much happier in a drier and sunnier site than many of its cousins. Shorter and more wind tolerant. Pack them in quite tightly for a mass of colour on a rockery. First bred in New Zealand.
April 10" (25cm)
113-38 £5.50 for 10, £12.30 for 25 or £23.00 for 50

JULIA JANE (10)
Soft pale yellow with billowing skirts, a named form of *N. bulbocodium romieuxii*, the species which derives from high on the Atlas mountains. Charmingly petite and early flowering they look better and flower for longer if protected from too much wind and rain, but are totally hardy with regard to the cold. In the summer they should stay dry. Small bulbs as you would expect.
Feb 6" (15cm)
113-101 £4.50 for 5

MARTINETTE (8)
Brilliant yellow with several flowers on each stem, the centres darker, with a small, more orange coloured cup with an enormous scent. Narrower leaved and taller, not one for the shadier garden.
March 14" (35cm)
113-84 £3.50 for 5 or £9.50 for 15

MINNOW (8) 🏆
Multi-headed, with many small primrose yellow flowers held flat only just above the top of the foliage, the small cup rather darker when they first open. It also needs more sunny conditions and to be grown in better drained soils, but is one that I wouldn't be without.
March/April 12" (30cm)
113-51 £4.30 for 10 or £9.20 for 25

MORE AND MORE (7)
Although I can't say that I like the name very much I can see how it occurred to someone, these produce many flowers! Each bulb produces 4 or 5 stems with several flowers each. Low growing and late flowering, ideal for a rockery or in a planter. Naturally small bulbs.
April 9" (25cm)
113-104 £2.70 for 5 or £7.20 for 15

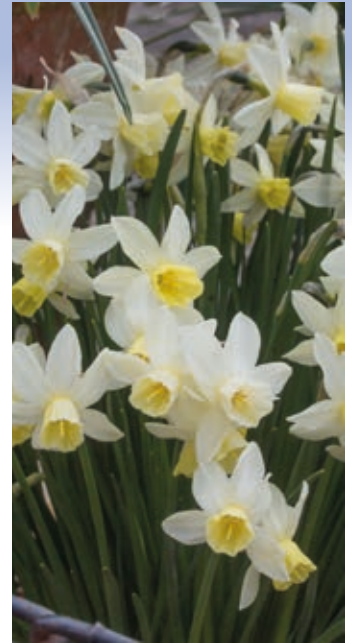
MOSCHATUS (13) 🏆
Palest creamy-white with a flower that always seems downcast in the way that it hangs – some describe it as swanlike? They seem to prefer damper soil in more shade than most daffodils, but the pale colours show in shadier conditions perfectly.
April 12" (30cm)
113-94 £5.70 for 3



Narcissus Oxford Gold



Narcissus poeticus recurvus



Narcissus Sailboat



Narcissus obvallaris



Narcissus Pipit



Narcissus Rijnveld's Early Sensation



Narcissus Segovia

OXFORD GOLD (10) 🏆

A selected form of *N. bulbocodium* (the hoop petticoat forms) with masses of large, butter yellow-blossoms which flower quite early with a great scent. The foliage is narrow and needle-like, indicating that they would prefer a sunnier situation.

April 6" (15cm)
113-92 £4.10 for 5 or £7.30 for 10

OBVALLARIS (13) 🏆

The daffodil suitable for naturalising that grows wild in South Wales is the Tenby daffodil, this looks just like it with a neat and tidy all yellow flower (though some doubt as to whether it is exactly the same plant). Perfect for planting into rough grass to provide 'bomb-proof' simple yellow daffodils.

March 10" (25cm)
113-30 £3.80 for 5, £10.00 for 15, or £18.00 for 30

PIPIT (7)

A multiheaded form called a 'reverse' bicolor. These flowers open with all parts a sharp lemon yellow and then fade outwards to a paler, creamier colour from the centre of the flower (most bicolors fade from the tips of the petals inwards). Tough enough to plant in rough grass.

April 12" (30cm)
113-32 £3.50 for 5 or £6.20 for 10

POETICUS RECURVUS (13) 🏆

The Pheasant's Eye daffodil. Wild in high alpine meadows in Europe and found gracing old gardens and orchards here. White with slightly swept back petals, highlighted by a stubby, burgundy rimmed cup. One of the last daffodils to flower and deliciously fragrant too. Very suitable for naturalising but because of its late flowering better planted in dappled shade in grass, or in a cool border amongst other plants.

May 15" (35cm)
113-28 £4.10 for 5, £11.30 for 15, or £20.50 for 30

RIJNVELD'S EARLY SENSATION (1) 🏆

Bright yellow throughout with a short flared trumpet. So far not so unusual for a daffodil. But this variety's real star quality is that it really does flower in the garden around New Year, sometimes earlier. It is going over when the main daffodil season begins. They provide a blast of spring in the middle of winter, even before the snowdrops. Plant them where they might be a bit protected from wintery gales.

Dec/Feb 12" (30cm)
113-44 £5.40 for 5 or £10.00 for 10

SAILBOAT (7) 🏆

Pale and interesting with a pleasant perfume, the white petals fly back from the slightly flared pale yellow trumpet on flowers which seem to hold their chins up! Keep calm and carry on flowering?

March/April 14" (35cm)
113-89 £3.00 for 5 or £8.00 for 15

SEGOVIA (3) 🏆

These have a flattened pale lemon trumpet that sits squarely against the bright white petals which flare back slightly. The whole effect is fresh and bright with narrow leaves, so it would like a brighter spot in which to grow.

April 6" (15cm)
113-87 £4.10 for 5 or £7.20 for 10

Flowering time	Flowering height
Item Code	Price



Narcissus Silver Chimes



Narcissus Tete-a-tete



Narcissus Toto



Narcissus Sir Winston Churchill



Narcissus Sweetness



Narcissus Thalia



Narcissus Topolino

SILVER CHIMES (8)

A lovely multi-headed tazetta form which would best be planted in slightly warmer conditions where it is not too wet. Broad leaved with pure white petals around a pale primrose cup with a huge scent. Big bulbs.

April 12" (30cm)
113-41 £6.00 for 5 or £11.00 for 10

SIR WINSTON CHURCHILL (4)

Filly white petals mix with splashes of sulphur yellow to produce a frothy and exuberant flower with a huge scent. They are quite tall and late flowering. Reliable, with several stems per bulb and each of these multiheaded.

April 18" (45cm)
113-97 £3.80 for 5 or £10.00 for 15

SWEETNESS (7)

Sturdy, simple, bright yellow and deliciously scented with narrow foliage that does not get in the way, everything a daffodil ought to be!

March 14" (35cm)
113-24 £3.50 for 5 or £9.50 for 15

TETE-A-TETE (12)

Widely grown since it was raised soon after WW2 and many people's favourite small daffodil. Very short when first in flower, extending in stem length as it matures and long lasting in cool conditions. Deep golden yellow and multi-headed from the biggest bulbs.

Feb/March 6" (15cm)
113-16 £6.00 for 10, £13.50 for 25

THALIA (5)

Raised in 1916. A national treasure, refined and elegant and a perfect foil for all those March yellows with a greeny-white, multi-headed, scented flower. A well-known classy favourite.

March/April 14" (35cm)
113-42 £3.40 for 5, £9.50 for 15, or £17.50 for 30

TOTO (12)

Gorgeously pale and simple flowered, the trumpet just a shade darker than the petals and early enough to overlap with that blue phase in the garden when the Anemones, Muscari and Chionodoxa are at their best, the combination is wonderful.

March/ April 8" (20cm)
113-90 £3.60 for 3

TOPOLINO (1)

Small, vigorous and as close as one can now get in commercial stocks to N. lobularis, the wild N. pseudonarcissus.

March/ April 8" (20cm)
113-54 £3.20 for 5 or £ 8.60 for 15



Brighten up Spring
with our **Narcissus**
Collection on page 58



Narcissus W. P. Milner



Narcissus White Lady



Leucojum aestivum Gravetye Giant



Narcissus Ziva



Uvularia grandiflora



Bongardia chrysogonum

W. P. MILNER (1)

Attributed to Henry Backhouse' breeding in Yorkshire pre 1869 and evidently named after William Pashley Milner his brother in law. Pale yellow throughout with swept-forward petals, beyond which peeps the shy trumpet. Long lasting and good for naturalising being smaller in stature.

March/April 9" (22cm)
113-47 £2.70 for 5 or £7.50 for 15

WHITE LADY (3)

Another form raised by Rev. Engleheart pre 1897 and another made famous as a major cut flower variety pre WW2, now sadly rather more rare. Taller stemmed with soft, more tissue-like white petals around a small yellow cup, sweetly scented.

April 18" (45cm)
113-65 £5.50 for 3

(PAPERWHITE) ZIVA (8)

For indoor or very protected situations. These are best suited to forcing in pots for indoor display with a huge scent. They need lots of light and protection from actual frost, but nothing too warm. They are also available for even earlier planting if you order from the Late Summer section. We work on about eight to ten weeks to first bloom from potting, it can be quicker if warm. White and multi-headed with a huge perfume. Plant them shallowly in the compost and in good light so they don't get too tall. Not reliably hardy outside. Big bulbs.

Dec/Jan 15" (38cm)
113-52 £8.50 for 5 or £10.50 for 7

LEUCOJUM

AESTIVUM GRAVETYE GIANT

The Loddon Lily, also known as Summer Snowflakes, with white, hanging, bell-shaped flowers and often confused with snowdrops despite them flowering much later (but not really in summer). Strings of emerald-tipped white bells hang from bare upright stems above glossy green daffodil-like foliage. Particularly happy in damp, even winter-flooded situations, but they will do anywhere where the soil is heavier and more moisture retentive. Daffodil-like bulbs, planted 5" (12cm) deep and 6" (15cm) apart.

April 18" (45cm)
106-07 £3.60 for 3 or £7.60 for 7

UVULARIA

Bombproof but quite slow growing woodland plants of N. America needing cool leaf-mould rich soils in part shade. Quite slow growing, established clumps are quietly impressive but easy to achieve in time in the right conditions. Brilliant with other choice shade plants like Trilliums, Sanguinaria and Erythronium.

GRANDIFLORA

Known as the Merrybells in the eastern USA. Deep yellow flowers hanging from arching stems. Soft foliage but completely resistant to our coldest weather.

April 12" (30cm)
133-05 £7.50

BONGARDIA

CHRYSOGONUM

A rare bulb with coppery yellow flowers and attractive grey-green leaves marked with red, best suited to somewhere sun-baked and dry in the summer. As well as being fully hardy they are also hugely drought resistant and love a hot dry soil. Very special members of the Berberis family with pretty, textured, nut-like tubers.

April/May 9" (22cm)
67-04 £4.90 or £13.00 for 3



Hyacinthoides non scripta



Hyacinthoides non scripta alba bracteata



Camassia leichtlinii caerulea Maybelle



Hyacinthoides non scripta alba



Hyacinthoides non scripta rosea



Camassia leichtlinii caerulea



Camassia leichtlinii alba

HYACINTHOIDES

The family name that covers all the varied 'Bluebells'.

NON SCRIPTA

The English Bluebell. Violet-blue nodding bells which glisten in damp shady glades. Always in demand and providing that perfect moment in April when the woods turn violet. Self-seeding, so increasing steadily once established. Plant 4" (10cm) deep and 4" (10cm) apart, working on up to 15 per sq. ft.

April/May 12" (30cm)
125-10 £5.00 for 10 or £11.50 for 25

NON SCRIPTA ALBA

Wild populations of English Bluebells are nearly all violet-blue, but rarely white flowered plants occur and it is from those that these derive. They will stand out in a sea of blue. These will always stay white and will increase below ground, though their seedlings may be blue.

April/May 12" (30cm)
125-12 £9.00 for 3

NON SCRIPTA ALBA BRACTEATA

White flowered with a pair of long whiskery bracts alongside each flower node. A quirky oddity.

April/May 12" (30cm)
125-26 £9.00 for 3

NON SCRIPTA ROSEA

A pale pink clone that is distinctly pink on first opening but fades to near white, we have built these up from a few bulbs over the years.

April/May 12" (30cm)
125-34 £6.50 for 3

CAMASSIA

Very hardy bulbs of North American origin that love that heavy, often rather poorly drained soil that many bulbs find too tough to cope with. If your soil is too heavy and the summers too wet to get repeat flowering from your Tulips some of these might be a suitable (and more sustainable) alternative, albeit with a narrower colour palette? Suitable for borders or in grassland where one could achieve a full six weeks of interest using a few different varieties.

LEICHTLINII ALBA

Ivory-cream in flower, standing out brilliantly against any dark backdrop and a good contrast plant for the Alliums in May. They spread their seed around freely, and in time sow themselves through the herbaceous border in good cottage garden style. They do not naturally make as big a bulb as the blue C. caerulea and often flower from quite small bulbs, ideally planted about 9" (22cm) apart. These generally flower about 10-14 days later than the 'standard' blue form of C. 'caerulea'.

May/June 36" (90cm)
70-07 £5.00 for 3 or £14.00 for 9

LEICHTLINII CAERULEA

Especially valuable and happy in heavier soils and a feature plant for the border in late spring where they make magnificent shows with many erect stems of deep lavender blue flowers, curving skyward from thick clumps when established. They set no seed, only increasing as the bulbs split up. Longer lasting flowers result from planting in some shade and they love clay soils that hold the moisture. Ideal partners might be Polygonatum x hybridum, Maianthemum racemosum or Tellima grandiflora. We supply big bulbs that should be planted with 5" of soil over them, 9" (22cm) apart.

April/May 32" (80cm)
70-06 £9.00 for 5 or £16.00 for 10

LEICHTLINII CAERULEA MAYBELLE

These flower two or three weeks later than L. caerulea, are much shorter and more compact and the flower colour more blue, less purple. Late May can be a time when one is noticeably short of colour in the garden so these really fill a gap and extend the Camassia display, and being somewhat shorter may suit more exposed sites?

May 24" (60cm)
70-16 £9.00 for 5 or £16.00 for 10



Camassia Blue Heaven

BLUE HEAVEN

Paler blue than all the other Camassia that we sell and of shorter stature. This is the result of a crossing of *C. cusickii* and *C. leichtlinii*, and a considerable improvement on the pale blue *C. cusickii* which I think gives the other Camassia a bad name (they do not flower well after the first year but being widely and cheaply sold are often people's first disappointing introduction to the family). This hybrid form is considerably better at repeat flowering.

April/May 24" (60cm)
70-17 £9.00 for 3

LEICHTLINII AVON'S STELLAR HYBRIDS

A seed raised form, these are the result of hybridisation and selection work done here. The plants exhibit widely varying colours, combinations of purple blue, mauve, greyish, purplish, green and pale pink. We cannot guarantee what you might receive, it is 'pot luck' but many are individually eye-catching and from the seed that they in turn produce, who knows what you might raise yourself! The bulbs also vary somewhat in size.

None for sale this year, drought affected and the stock needs to increase.

May 36" (90cm) - colours will vary
70-11



Camassia leichtlinii Sacajawea



Camassia leichtlinii semi-plena

LEICHTLINII SACAJAWEA

Carrying cream coloured flowers these are a variegated form with a bold cream coloured edge to the leaf, this nicely accentuates what is (in Camassia generally) not very interesting foliage. The name honours a native American Indian woman who saved the starving explorers on the Lewis and Clark expedition of 1805 as they crossed America east to west (and back again) for the first time, feeding them the native 'quamash' bulbs. Again 10-14 days later into flower than *C. caerulea*.

May/June 36" (90cm)
70-15 £9.00 for 5

LEICHTLINII SEMI-PLENA

A tall tower of full petalled, almost fluffy looking, cream coloured flowers. A sterile form of the cream flowered plant that is the species: *C. leichtlinii alba*. But the benefit of sterility for gardeners is a longer flowering season. Better where they receive more sun than shade and better still where the soils are damp all through spring and early summer.

June 36" (90cm)
70-08 £8.00 for 3



Camassia quamash

QUAMASH (ESCULENTA)

The shortest of all the Camassia, suitable for naturalizing in rough, very late mown grass, or to dot in groups informally in the borders. Much smaller bulbed than all the forms above, these give rise to rich, dark purple-blue flowers with startling yellow stamens. A true meadow plant. The bulbs are often pitted and marked when dormant, though this seems to make no difference to their growth, plant them 3-4" (10cm) apart.

May/June 12" (30cm)
70-05 £3.00 for 10 or £7.00 for 25

FRITILLARIA

The plants listed below are illustrative of the amazing diversity of the family, from small bulbs of moist riverine meadows to giants of near desert like locations. Sadly few of the many species of Fritillaria are well suited to 'ordinary' garden conditions in Britain but, particularly if you can invest some effort into their planting and exercise judgment in where to plant them, the following are to be recommended. Our website does provide more detail on all of them.



Fritillaria acmopetala



Fritillaria elwesii

ACMOPETALA

A native of the Eastern Mediterranean with one or more hanging jade green bell-shaped flowers, reflexed at the opening, with chocolate brown markings. Grow them in a little shade in fairly well-drained conditions, out of the strongest wind.

April/May 12" (30cm)
85-04 £6.00 for 3 or £9.20 for 5

ELWESII

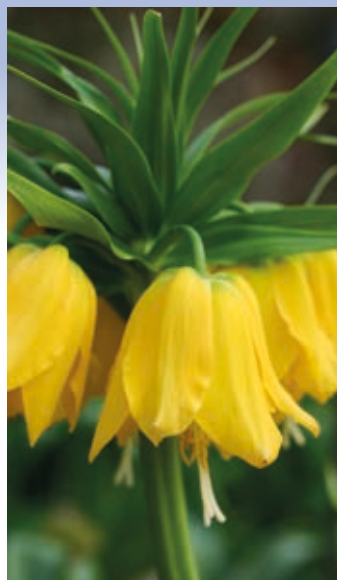
Dark stemmed with narrow, more tubular, slate and green flowers covered in a fine bloom held atop a fine stem. They hail from southern Turkey and will happily survive our cold winters, but would do better for a dry summer rest, so that calls for better drained soils.

April 15" (35cm)
85-07 £8.00 for 3

Flowering time	Flowering height
Item Code	Price



Fritillaria imperialis William Rex



Fritillaria imperialis lutea



Fritillaria imperialis Rascal Chopin



Fritillaria meleagris



Fritillaria michailovskyi



Fritillaria pallidiflora

IMPERIALIS WILLIAM REX

Deeply coloured orange-red flowers which surround a strong dark stem. A selected and named form of the Crown Imperial Lily. A top knot of green leaves above the flower makes them look quite exotic. For rich sunny soils, well-watered in spring but well drained in summer, sheltered from wind and planted 6-8" (15-20cm) deep.

April 30" (75cm)
85-20 £9.00 or £25.00 for 3

IMPERIALIS RASCAL CHOPIN

The Rascal series is the result of years of interbreeding *F. imperialis* and *F. raddeana* to produce bulbs that flower younger, aiming (eventually) to bringing the cost down, but they are still relatively new! I like their daintier stature, their less regimental stance and the earlier flowering which ought to allow more time for them to 'put on weight' before going dormant again, something the later flowering ones struggle with in some years.

March/April 30" (75cm)
85-23 £8.50 or £23.00 for 3

IMPERIALIS LUTEA

Bright yellow flowered on a pale green stem, no more difficult to grow than the red flowered form. Both grow very rapidly in the early spring and needing to quickly replenish that effort, we suggest that they benefit from liquid feeding whilst in growth to encourage flowering in subsequent years.

April 36" (90cm)
85-21 £9.00 or £25.00 for 3

MELEAGRIS



The ever popular Snakeshead Fritillary. Serpent like with darkly chequered nodding bells, a smattering of which may be paler or even white. In Elizabethan times it was widespread – typically in damp, grassy, late-cut meadows and in moist alluvial soils. So, with that in mind, aim for these conditions to have them increasing and self-seeding yourself. They are best ordered early to allow for timely planting. Plant 4" (10cm) deep in drifts, 4" (10cm) apart (10-15 per sq ft.)

March/April 12" (30cm)
85-27 £6.00 for 15 or £17.00 for 50

MICHAILOVSKYI

A striking small plant with a yellow band around the rim of the chunky, reddish brown, bell shaped flower. These need a well drained soil to persist in the ground, otherwise growing them in a pot in the protection of something such as a bulb frame to keep them drier, particularly in summer, is advisable.

March / April 8" (20cm)
85-31 £3.20 for 3

PALLIDIFLORA



Pale straw green bells, speckled within the bell with darker flecking. Usually the broad leaves and relatively large flowers act as a sail and the stems become more S shaped. This actually helps to see inside the flower! None too difficult and charming in a raised bed or in well drained soils.

April 12" (30cm)
85-36 £5.00



Fritillaria persica



Fritillaria pontica



Corydalis flexuosa China Blue



Corydalis flexuosa Blue Dragon



Fritillaria persica alba



Fritillaria raddeana



Corydalis flexuosa Blue Panda

PERSICA

We grew these with ease and to great proportions 30 years ago on the limestone brash at Bradford on Avon. That indicated their surprising preference for good light, and good drainage. Our heavier soils here seem to suit them less well, but they are impressive all the same with towers of bell shaped flowers like grapes with a similar bloom.

April/May 24-30" (60-75cm)
85-37 £8.00 or £22.00 for 3

PERSICA ALBA

A form in which the dusky black flowers have lost their pigmentation and instead are a fresh matt green. Huge bulbs.

April/May 24-30" (60-75cm)
85-43 £15.00 each

PONTICA



Bell shaped flowers (hardly showing any of the flared lip that you see in *F. acmopetala*) with green and brown markings. Shorter too and more suited to a bit more shade, seeding freely where happy.

April/May 9" (25cm)
85-39 £6.00 for 3

RADDEANA

Closely related to the Crown Imperials above but rather shorter and less formal arrangement of flowers in yellowish green. They root early in the autumn and then emerge equally early and race up to flower quickly. They will need a bit of shelter from the wind and good light, though are very cold tolerant.

Mar/April 18" (45cm)
85-41 £12.00

CORYDALIS

A family with snapdragon like flowers of which we sell pot grown 'flexuosa' forms. These do not derive from a true bulb so are supplied as growing plants in small pots ready to plant out. These need 'encouragement' to grow away from the compost in which they are currently established, tease out the roots a bit, break up the pot shape root ball and firm them in to your soil so that they root across that boundary.

FLEXUOSA CHINA BLUE

Exhibiting beautiful pink-fringed juvenile foliage when planted in some sunshine and startling pale blue flowers, this still remains a 'buy on sight' plant. Sold by the potful.

Spring/Summer 6" (15cm)
76-22 £3.50

FLEXUOSA BLUE DRAGON

Bronze purple foliage, its colour heightened when planted in some direct sunshine, particularly in the early spring, with deep purple-blue flowers. Sold by the potful.

Spring/Summer 6" (15cm)
76-12 £3.50

FLEXUOSA BLUE PANDA



The foliage shows red markings on the mainly deep green leaves with reddish stems and deep purple-blue flowers. Sold by the potful.

Spring/Summer 6" (15cm)
76-24 £3.50



Convallaria majalis Bordeaux



Convallaria majalis Hardwick Hall



Convallaria majalis Fernwood's Golden Slippers



Convallaria majalis Fortins Giant



Convallaria majalis Hofheim



Convallaria majalis rosea

CONVALLARIA

Lilies of the Valley. Spring flowering plants of woodland origins with stringy rhizomes under the soil. They like humus rich soil and part shade but everyone's experience of growing these is different and (as is reported to us) they will grow in the most unlikely places. But the critical commonality is that they do need patience to begin with and tales of them taking 2 or 3 years to settle abound. They are all about 6" (15cm) tall when in flower in May.

MAJALIS BORDEAUX

Bigger flowered than the ordinary forms with what are supposed to be darker leaves - but grown here in different conditions that is hard to verify. It has bulked up well from the small patch we started with.

75-13

£9.00 for 3

MAJALIS FORTINS GIANT



Larger flowered and taller than the 'common' white Lily of the Valley but equally scented. For sun or shade but in the former they need a more moisture retentive soil. Good, strong, fresh-dug rhizomes (stringy roots) to plant horizontally about 2" deep (5 cm) and twice that apart.

75-05

£4.50 for 5

MAJALIS HARDWICK HALL

Wide leaved with a creamy coloured margin to the leaf, providing a feature of interest even before they flower. The flowers are large, white and scented.

75-09

£9.00 for 3

MAJALIS HOFHEIM

A creamy yellow edge to the otherwise plain green leaf marks these out, these marginal highlights are considered rather stronger in this form than it is in C. Hardwick Hall, the flower is creamy white and scented.

75-12

£9.00 for 3

MAJALIS FERNWOOD'S GOLDEN SLIPPERS

A startlingly golden leaved form, particularly in the early spring before the flowers appear. They appear perfectly stable as there has been no reversion to green. There is an ongoing argument regarding the name, should it be Verwood, Fernwood or what? We obtained the initial stock from the late Stephen Taffler (inveterate variegated plant addict) who used to live nearby.

75-11

£9.00 for 3

MAJALIS ROSEA

Like small and very exclusive pink pearls, a vigorous form which we know to be tough and productive with lovely pale pink fragrant flowers. Best in dappled light or part shade, direct bright sunshine tends to burn out the pink. As with any Convallaria you'll need a degree of patience before they thicken up.

75-07

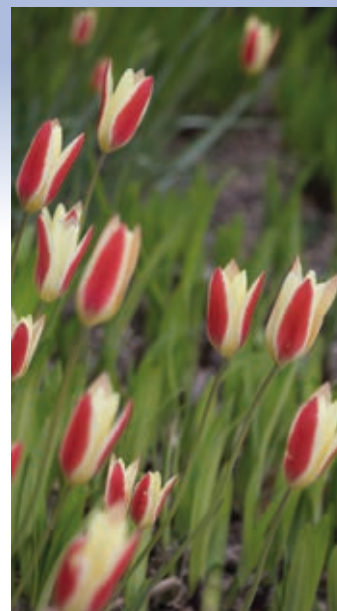
£9.00 for 5



Tulipa bakeri Lilac Wonder



Tulipa batalinii Honky Tonk



Tulipa clusiana Cynthia



Tulipa batalinii Bronze Charm



Tulipa batalinii Salmon Gem



Tulipa clusiana Peppermintstick

TULIPA SPECIES TULIPS

The species types tend to have small bulbs, typically about the size of an almond. They are particularly grown for their bright bold colours in late April and early May and due to the fact that in the right conditions persist from year to year and even increase better than do the bigger hybrid forms. In villages nearby there are various forms that I see growing and spreading. They are sun lovers and don't want it too wet, particularly in the summer when the bulbs are resting. They are attractive to mice and squirrels looking for the high levels of the carbohydrates that they contain in the autumn, if that might be a problem there is mention (under the Crocus heading) of a way of keeping them protected and the same applies here. They should be planted quite close together. The quantity in the first pack size for each item would be suitable for a 5-6" (12cm) pot or an equivalent area of garden.

BAKERI LILAC WONDER



Silvery pink with a yellow bull's eye in the centre of each flower, most of which are multi headed and held above broad, deep green, glossy leaves. A dependable sun loving plant closely related to T. saxatilis. **Mid-Late April** 6" (15cm) **131-53 £4.30 for 10 or £9.70 for 25**

BATALINII BRONZE CHARM

Apricot yellow with increased bronzing on the petals in sunnier conditions. Grey-green leaved. A really endearing small tulip with poise and character. Gravelly soils or planted into a well-drained rockery would be perfect. **Mid-Late April** 10" (25cm) **131-08 £5.00 for 5 or £13.50 for 15**

BATALINII SALMON GEM

Pinkish red within the flower with a contrasting paler, dusty pink reverse to the petal. Grey- green leaved. A relatively new hybrid for well drained conditions in good light.

Mid-Late April 10" (25cm) **131-146 £5.00 for 5 or £13.50 for 15**

BATALINII HONKY TONK



Pale yellow flowered above grey-green foliage. The Tulipa batalinii group are closely related to the red flowered T. linifolia types, and may be botanically indistinguishable.

Mid-Late April 10" (25cm) **131-03 £5.90 for 10 or £13.30 for 25**

CLUSIANA CYNTHIA



These are growing and flourishing in some rough grass here somewhat to my surprise, but given good light and a drier summer rest they have performed well. This form is yellow behind the pink flush.

April 10" (25cm) **131-167 £3.00 for 5 or £8.50 for 15**

CLUSIANA PEPPERMINTSTICK



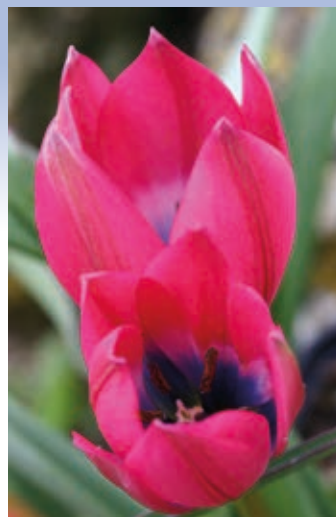
The furled petals look like a little stick of edible rock which, when open, are ivory white inside with a violet eye, the backs of the petals are blushed cerise pink. The whole effect is lovely but remember that all the clusiana forms have reasonably large flowers on quite slender stems so plant them in sunny conditions where it is not too windy.

April 10" (25cm) **131-02 £6.50 for 10 or £14.60 for 25**

Flowering time Item Code	Flowering height Price
-----------------------------	---------------------------



Tulipa humilis Lilliput



Tulipa Little Beauty



Tulipa Little Princess



Tulipa humilis Persian Pearl



Tulipa linifolia



Tulipa praestans Shogun



Tulipa sprengeri

HUMILIS LILLIPUT

Almost flowering at ground level and in flower thereafter for ages as the stem length increases slightly. A glossy, deep crimson red with a dark centre.

March /April 4" (10cm)
131-15 £5.90 for 10 or £13.30 for 25

HUMILIS PERSIAN PEARL

The species T. humilis of which this is a selected form comes from Turkey and eastwards, all the family has low leaves nearly flat to the ground and colourful flowers. They need full sunlight to stay compact. Deep magenta rose coloured flowers with silvery backed petals

April 4" (10cm)
131-12 £5.90 for 10 or £13.30 for 25

LINIFOLIA

A crimson- red flowered, low growing small tulip with red margins to the wavy edged leaves suitable for any sunny well drained garden site.

Mid-Late April 6" (15cm)
131-26 £2.20 for 10 or £5.50 for 25

LITTLE BEAUTY

Growing wild in much the same area as T. humilis these have shockingly bright crimson-pink flowers which open wide in the sun to reveal white and blue centres which is slightly startling. For a sunny well drained site again.

Mid-Late April 5" (12cm)
131-27 £4.30 for 10 or £9.70 for 25

LITTLE PRINCESS

Of complex parentage but similar to the humilis forms above these exhibit fiery coppery-orange coloured flowers, goblet shaped before opening fully in the sun, the flowers are on short stems so are pretty resilient, a really cracking good dwarf tulip for a sunny spot.

Mid-Late April 5" (12cm)
131-05 £5.90 for 10 or £13.30 for 25

PRAESTANS SHOGUN

Not as dwarf as most of the other bulbs in this section but earlier to flower than any of the hybrid forms that follow. A remarkable colour for a tulip, multiheaded in a clear pale Marigold orange.

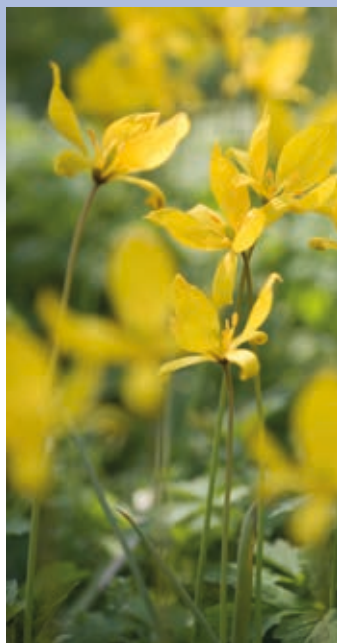
March/April 14" (35cm)
131-07 £4.30 for 10 or £9.70 for 25

SPRENGERI

Wonderful in early summer if you can get shafts of light to pick out the rich gold, verdigris and crimson colours. They will naturalise in many situations, either in shade or sun, but resent disturbance as young plants. They are an enigmatic and emblematic tulip, but we are always short of them so do order early.

April/May 12" (30cm)
131-35 £6.00 each

Sign up to our monthly newsletter to get News, Views, Special Offers, Advice and Alerts to sales and more. If you want to you can Unsubscribe yourself at any time.



Tulipa sylvestris



Tulipa turkestanica



Tulipa Exotic Emperor



Tulipa tarda



Tulipa whittallii



Tulipa Flaming Purissima

SYLVESTRIS

Easy to grow, and possibly the only one that will persist in some shade, but naturally a bit shy to flower. We have some that have increased happily under an Amelanchier for 10 years or so, flowering intermittently as seems to be their nature, I am not sure why they do not flower more profusely. The flowers are sulphur yellow and fragrant.

April 12" (30cm)
131-37 £6.80 for 10 or £15.80 for 25

TARDA

A perennial performer with larger, very rounded bulbs which produce multiple flowers from each bulb, all crammed together, honey scented in a deep golden yellow, edged in white. Pretty bulbs to plant in a sunny site. Easy and persisting.

Mid-Late April 5" (12cm)
131-38 £2.70 for 10 or £6.00 for 25

TURKESTANICA

Ivory and cream coloured within the flower with dark anthers contrasting with the petals, greenish tinged on their backs. It is widespread in its natural range from SE Europe through to Iran and Russia. Growing away early and quite tall they need bright conditions out of too much wind.

April 9" (20cm)
131-134 £2.70 for 10 or £6.00 for 25

WHITTALLII

Named after Edward Whittall, a plant collector extraordinaire who collected many such treasures of around Izmir in Turkey where there is still a famous garden named after him. These are a gorgeous bronzy orange with a dark centre and would love sunny conditions in a raised bed or rockery.

April 12" (30 cm)
131-42 £5.00 for 5 or £13.50 for 15

FOSTERIANA TULIPS

(Group 13) Earlier flowering than the main Tulip display, large flowered on sturdy stems and available in lovely pastel colours. They need planting about 5" (12cm) apart and are equally suitable for containers or borders.

EXOTIC EMPEROR

Double petalled in white and when about to flower somewhat rose-like with the white buds clasped by intriguing green bracts. Where we have seen it in gardens it has persisted for years on thin stony soil.

April 18" (45cm)
131-100 £7.50 for 10, £16.80 for 25 or £30.00 for 50

FLAMING PURISSIMA

Creamy white when they first open with just a hint of pink at the edges of the petals. This becomes increasingly dominant as the flower matures, feathering gracefully in from the edge of the petals which are mostly red with dark anthers when they fully develop.

Mar/April 14" (35cm)
131-71 £6.50 for 10, £14.60 for 25, or £26.50 for 50

Flowering time	Flowering height
Item Code	Price



Tulipa Orange Emperor



Tulipa Annie Schilder



Tulipa Brown Sugar



Tulipa Purissima



Tulipa Barcelona



Tulipa Calgary

ORANGE EMPEROR 🏆

One of my favourites with quite long flowers in pale orange with pretty green shading at the base. Good for bold contrast and a great combination planted with Purissima below for an early flowering twosome. Picture taken at Great Dixter.

Mar/April 16" (40cm)
131-72 £6.50 for 10, £14.60 for 25,
or £26.50 for 50

PURISSIMA 🏆

Opening a pale primrose yellow, about which we receive a number of phone calls wondering whether a packing mistake has occurred, they turn through creamy shades to pure white and then in late March sunshine they open wide to reveal dramatic mascara black anthers. Strong stemmed over bright green leaves,

Mar/April 18" (45cm)
131-16 £5.90 for 10, £13.30 for 25,
or £24.00 for 50

MID SEASON TULIPS

These Triumph (Group 3) and Darwin (Group 4) tulips all have roughly the same flowering season - we used to say mid to late April and early May, but in our fickle climate this is just a guide, some years they are early and the frequency of that happening seems to only increase. These would be planted about 5" (12cm) apart and are very well suited to the open garden in borders, or containers. Some suggested tulip combinations that look good together for this purpose are offered under each entry.

ANNIE SCHILDER

Warm rose orange when in bud then the flower opens and pales to a lighter shade with some yellow at the petal edges. Broadly bowl shaped with a lovely perfume that seems to come with many of the orange tulips. Dating back to the 1920s this is one that has been around a while.

April 18" (45cm)
131-135 £5.90 for 10, £13.30 for 25,
or £24.00 for 50

👇 With *Ballerina*, *Paul Scherer* and *Havran*

BARCELONA 🏆

Outstanding at Keukenhof when I visited with strong stems and a very vibrant pink flower. It made the shortlist straight away.

April 18" (45cm)
131-159 £7.50 for 10, £16.80 for 25,
or £30.00 for 50

👇 With *Ballerina*, *Merlot* or *Honeymoon*

BROWN SUGAR

Difficult to pin down in colour terms, bronzed apricot or coppery pink perhaps with some purple on the reverse, tall and strong stemmed with a beautiful perfume.

April 18" (45cm)
131-142 £7.50 for 10, £16.80 for 25,
or £30.00 for 50

👇 With *Pieter de Leur*, *Queen of Night* or *Firework*

CALGARY 🏆

Very short and compact with waxy white flowers that are brilliant in exposed conditions, shrugging off any wind and rain, lasting brilliantly. We use them at the edges of exhibits and you could use them in the same way in the garden or containers.

April 9" (22cm)
131-48 £7.50 for 10, £16.80 for 25,
or £30.00 for 50

👇 With *Prinses Irene*, *Orange Princess*, *Flaming Flag* or purple hyacinths



Suggested planting companions



Tulipa Calgary Flames



Tulipa Flaming Flag



Tulipa Havran



Tulipa Couleur Cardinal



Tulipa Grand Perfection



Tulipa Hemisphere

CALGARY FLAMES



A variant on the Calgary model with a prominent yellow flush to the outer petals, we find them invaluable at flower shows as with such short stems they do not flop over during the show, so at the front of borders or close to the edge in big pots these too could lift your display?

April 9" (22cm)
131-136 £7.50 for 10, £16.80 for 25
or £30.00 for 50

With Prinses Irene, Orange
Princess or Calgary

COULEUR CARDINAL

Intensely crimson red with darker more plum coloured marking on the outer petals, famously scented and long lasting, first named in 1845.

April 16" (40cm)
131-126 £6.50 for 10, £14.60 for 25
or £26.50 for 50

With Paul Scherer, City of
Vancouver or Cummins.

FLAMING FLAG

White with broad raspberry flames from the base. The white with a crimson mix is like an expensive ice cream, absolutely perfect in combination with the pink and white apple blossom that is out at the same time. A few of these tulips go a long way.

April 18" (45cm)
131-168 £5.90 for 10, £13.30 for 25,
or £24.00 for 50

With Paul Scherer, Hemisphere or
Queen of Night

GRAND PERFECTION



Exhibiting broad flashes of red over what is, when they first open, quite a yellow background, but this soon turns white for a stronger raspberry and vanilla contrast. Reminiscent of the tulips illustrated in the paintings by the Dutch Masters at the height of the Tulip mania.

April 18" (45cm)
131-123 £5.90 for 10, £13.30 for 25,
or £24.00 for 50

With Hemisphere, Couleur Cardinal
or Sanne

HAVRAN

Darker than plum in some lights, with a grape like bloom dusting the petals, these are not quite as dark as Queen of Night but are a slightly more pointed shape and would open earlier, so these could start off your dark theme. Quite often they have more than one flower to a stem.

April 18" (45cm)
131-57 £6.50 for 10, £14.60 for 25
or £26.50 for 50

With Flaming Flag, City of
Vancouver or Jan Reus

HEMISPHERE

These change colour as the flowers mature so the effect is one of gradual evolution, each flower developing its freckling and faint stripes at a slightly different rate. The whole result is a range of warm colours from white through to raspberry. Most tulips are pretty uniform, these are less so, which I like. They do look better en masse.

April 18" (45cm)
131-137 £7.50 for 10, £16.80 for 25
or £30.00 for 50

With Flaming Flag, Flyaway or
Havran



See our range of Tulip Collections on page 61



Tulipa Jan Reus



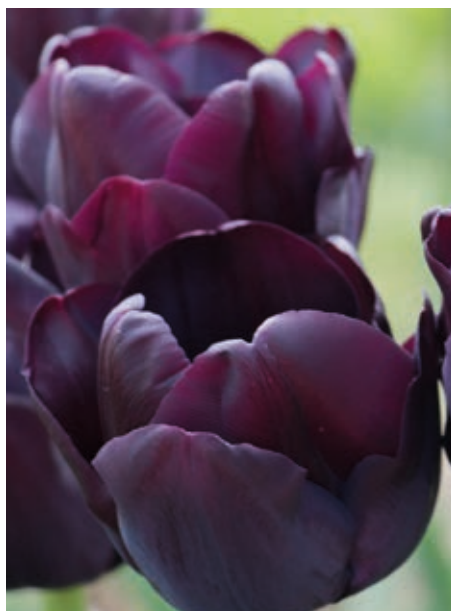
Tulipa Negrita



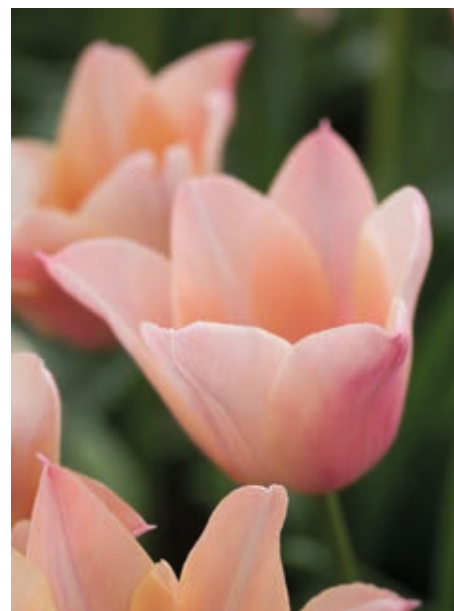
Tulipa Prinses Irene



Tulipa Mistress



Tulipa Paul Scherer



Tulipa Sanne

JAN REUS

Deep purple-red when first open they fade to a ruby red with petals that shimmer in the sun atop a dark strong stem that adds to the impact. They combine with just about everything, especially the acid green foliage of emerging Euphorbia.

April 18" (45cm)
131-62 £6.50 for 10, £14.60 for 25 or £26.50 for 50

With City of Vancouver, Havran, Negrita or nearly everything else

MISTRESS

A clear strong pink with simple flowers they remind me of an old favourite now unobtainable called Douglas Bader which also showed very well.

April 20" (50cm)
131-162 £5.90 for 10, £13.30 for 25, or £24.00 for 50

With Honeymoon, Foxtrot or Angelique

NEGrita

One might imagine Negrita to be darker than the name suggests? This is a lovely purple tulip with beetroot veining running through the petals, strong stemmed too.

April 18" (45cm)
131-149 £5.90 for 10, £13.30 for 25, or £24.00 for 50

With Paul Scherer, Honeymoon or La Belle Epoque

PAUL SCHERER

Strong stemmed, with slightly grey-green foliage contrasting with the exceptionally dark cup shaped flowers. I love the possibilities that tulips provide to play with colours in a way that no other plants allow. As dark as Queen of Night and probably with a stronger stem these are better than dark chocolate.

April 18" (45cm)
131-107 £7.50 for 10, £16.80 for 25 or £30.00 for 50

With Honeymoon, Couleur Cardinal or Sanne

PRINSES IRENE

An earthy mix of oranges, marmalade and purple, but unlikely as it seems they work brilliantly together. This is a great favourite, with low reddish marked leaves and on short stem it is less affected by poor weather and adding in a huge scent, one can see why it is so popular. See also 'Orange Princess' which is a double form of the same tulip, page 39.

April 15" (38cm)
131-10 £7.50 for 10, £16.80 for 25 or £30.00 for 50

Try it with Calgary or Calgary Flame for a low duo, or maybe with its double flowered cousin Orange Princess

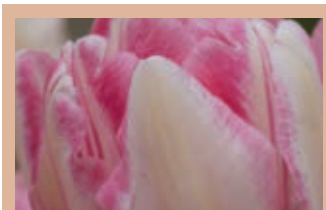


SANNE

Pale apricot when they first open with a pinkish tinge added to the mix as they mature, the tips of the petals always slightly paler. Soft, feminine and subtle with a great shape.

April/May 18" (45cm)
131-122 £7.50 for 10, £16.80 for 25 or £30.00 for 50

With Pacific Pearl, Jan Reus or Paul Scherer



We have a collection of **Calming Tulips** on page 61



Tulipa Sunny Prince



Tulipa Black Parrot



Tulipa White Parrot



Tulipa Unique de France



Tulipa Rococo



Tulipa Angel's Wish

SUNNY PRINCE

Bright butter yellow within the flower, slightly paler on the backs of the petals, this is a relatively short, sturdy form seemingly filled with happiness.

April 14" (34cm)
131-143 £5.90 for 10, £13.30 for 25
 or £24.00 for 50

With Lambada, Queen of Night or Prinses Irene

UNIQUE DE FRANCE

Amazing petals - shiny and gleaming like a newly painted pillar box, certainly one of the most vibrant coloured tulips but most unique for its foliage, the leaves are deep green and very waxy, quite different from any other tulip's foliage. Good for the garden or containers where they will be noticed!

April 16" (40cm)
131-121 £6.50 for 10, £14.60 for 25
 or £26.50 for 50

Outstanding on its own.

PARROT TULIPS

(Group 10) *Exuberance is the greatest asset of this group, with flowers that seem to be overflowing with frilled or fluted petals. Dramatic is the best way to describe them I feel. Wonderful to use as part of a fantastical flower arrangement. Big and heavy headed, best in good light and in some breeze which will shake the rain from the multitudinous petals.*

BLACK PARROT

The unopen flower buds seem to be clutched in a green fingered grip and when it escapes to flower the dark chocolate purple petals seem to erupt in a cockscomb of frilled excess, a dark favourite indeed.

April/May 20" (50cm)
131-17 £6.50 for 10, £14.60 for 25
 or £26.50 for 50

With White Triumphator, Angel's Wish or Spring Green



ROCOCO

Earlier than most other Parrot tulips with short stems, these are deep velvety red with the reverse of the petal marked with green, the petals tightly crimped as though they had been gripped too tight in the bud, very suitable for pots.

April 12" (30cm)
131-127 £6.50 for 10, £14.60 for 25
 or £26.50 for 50

With Jan Reus, Paul Scherer or White Parrot for vivid contrast

WHITE PARROT

Large flowered, the whole head bursting full of crimped petals, like clouds of egg white about to become meringue, the outermost ones with a tinge of creamy green.

April/May 18" (45cm)
131-64 £10.00 for 10, £22.50 for 25
 or £41.00 for 50

With Queen of Night, Sanne or Backpacker

SINGLE LATE

(Group 5) *These have simple, elegant cup or goblet shaped flowers and longer stems, flowering after the mid season tulips (but overlapping with them).*

ANGEL'S WISH



White with creamy yellow. Simple looking with broad petals and a strong stem. A great white, rather bigger flowered than City of Vancouver.

April/May 18" (45cm)
131-32 £7.50 for 10, £16.80 for 25
 or £30.00 for 50

With Pieter de Leur, Sanne or Merlot

Flowering time	Flowering height
Item Code	Price



Tulipa Antoinette



Tulipa Queen of Night



Tulipa Elegant Lady



Tulipa City of Vancouver



Tulipa Ballerina



Tulipa Firework

ANTOINETTE

A chameleon tulip which starts greenish-yellow then fades to creamy-yellow with a hint of pink and finally turns salmon pink with a touch of orange. With a multi headed nature this provides lots of flower and continual development and interest.

April/May 20" (50cm)
131-153 £7.50 for 10, £16.80 for 25
or £30.00 for 50

With Firework, Princess Irene or Angelique

CITY OF VANCOUVER

Pale creamy yellow and turning paler as they age. Simply gorgeous.

April/May 20" (50cm)
131-156 £6.50 for 10, £14.60 for 25
or £26.50 for 50

With Queen of Night, Pacific Pearl or Mistress

QUEEN OF NIGHT

One of the darkest delights, and justifiably one of our best sellers. Though not quite black, only Paul Scherer comes close. The deepest hue shows on bulbs in direct sunlight, in more shade they are deep purple and often taller.

April/May 24" (60cm)
131-58 £5.90 for 10, £13.30 for 25
or £24.00 for 50

With City of Vancouver, Honeymoon or Pacific Pearl

LILY FLOWERED TULIPS

(Group 6) Characterised by their longer stems and that refined 'hour glass' shape to the flower, waisted when in bud and opening up in the sun with pointed tips. They are great in flower borders, and in tall containers which seem to exaggerate the stem length.

BALLERINA

Soft tangerine coloured flowers, though different lights and differing levels of UV light seems to result in some variation in the shade from year to year. One of my favourites (and in that I am not alone), I particularly love its scent when warmed in the sun. The tangerine hue also goes perfectly with all the leafy greens, altogether very eye-catching with a heady perfume.

April/May 20" (50cm)
131-65 £6.50 for 10, £14.60 for 25
or £26.50 for 50

With Queen of Night, Sanne or Firework

ELEGANT LADY

Pale ivory yellow with pale pink edging, refined and elegant.

April/May 24" (60cm)
131-78 £6.50 for 10, £14.60 for 25
or £26.50 for 50

With Mistress, Sunny Prince or Cummins



FIREWORK

A bright and zingy combination of strong yellow petals with a bright red flare up the centre of each petal. Not particularly tall so perhaps a better choice for windy sites?

April/May 16" (40cm)
131-163 £7.50 for 10, £16.80 for 25
or £30.00 for 50

With Foxtrot, Hemisphere or Sunny Prince



Looking for a project?
Why not try the **Layered Lasagna Planter Collection** on page 58



Tulipa Fly Away



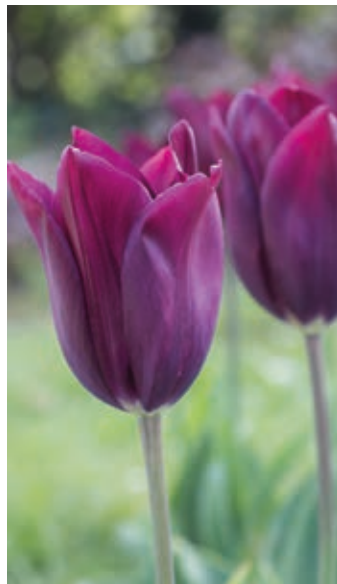
Tulipa Madalyn



Tulipa Pieter de Leur



Tulipa Greenstar



Tulipa Merlot



Tulipa Très Chic



Tulipa White Triumphator

FLY AWAY

Much more apparently 'Lily flowered' with the typically pointed silhouette, the band of yellow is narrower and the red rather more pronounced.

April/May 22" (55cm)
131-164 £6.50 for 10, £14.60 for 25
or £26.50 for 50

🌱 With Firework, Unique de France or Hemisphere

GREENSTAR

I saw these at Keukenhof on a busy day there, it was heaving with people and I had trouble getting close to take a shot of these tulips without people in the way because everyone else was taking selfies in front of them. They were evidently the right background for everyone else. They are extraordinary, very angular, vase shaped and strongly green marked.

April/May 20" (50cm)
131-165 £7.50 for 10, £16.80 for 25
or £30.00 for 50

🌱 With City of Vancouver, Flyaway or White Parrot

MADALYN

Most impressively coloured with vibrant pink over most of the petal and a base of green, the flowers splay open very dramatically and widely. It was also being hugely admired in Holland. New, and I think it will be in heavy demand.

April/May 20" (50cm)
131-166 £10.00 for 10, £22.50 for 25
or £41.00 for 50

🌱 With Barcelona, Pieter de Leur or Pacific Pearl

MERLOT

Tall and elegantly poised with flowers that mimic a wine glass in both shape and content, there is no doubt about how the name arose.

April/May 28" (65cm)
131-130 £7.50 for 10, £16.80 for 25
or £30.00 for 50

🌱 With Barcelona, Havran or Pieter de Leur

PIETER DE LEUR

Glistening, vibrant, deep vermilion red, almost opalescent as a ruby tiffany lamp, not a tulip for the faint hearted but then these are showy tulips doing what they do best! My father's favourite with his dimming eyes.

April/May 18" (45cm)
131-150 £5.90 for 10, £13.30 for 25
or £24.00 for 50

🌱 With Spring Green, Angel's Wish or White Triumphator

TRÉS CHIC

Creamy white when in bud, becoming white with faint green tips to the pointed petals as they open properly, sometimes with pink as well. Much shorter in stature which in exposed gardens or some planters may be an advantage, a tulip that lives up to its name.

April/May 12" (30cm)
131-66 £7.50 for 10, £16.80 for 25
or £30.00 for 50

🌱 With Unique de France, Mistress or Negrita

WHITE TRIUMPHATOR



All white with long clean green stems. An iconic and popular tulip, but not so typically lily flowered in its shape. They seem always more dramatic when provided with a stronger background against which to view them.

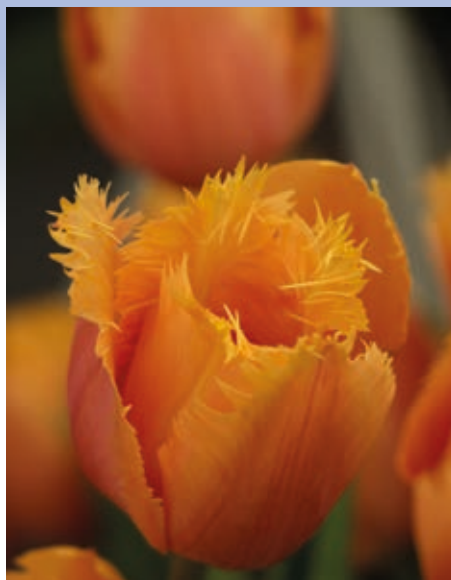
April/May 20" (50cm)
131-46 £7.50 for 10, £16.80 for 25
or £30.00 for 50

🌱 Safe as houses, goes with everything!

Flowering time	Flowering height
Item Code	Price



Tulipa Cummins



Tulipa Lambada



Tulipa Artist



Tulipa Honeymoon



Tulipa Pacific Pearl



Tulipa Spring Green

FRINGED TULIPS

(Group 7) First popular in the florist shops these are fringed by frills along the edges of the petals, they are not just frivolous though, they provide a contemporary twist.

CUMMINS

Dove grey in some lights, a pale lilac purple in others, with a deep white frosting around the edges of the petals.

April/May 15" (38cm)
131-88 £10.00 for 10, £22.50 for 25 or £41.00 for 50

With Havran, Negrita or Queen of the Night

HONEYMOON

Creamy white, sometimes with a tinge of green and edged in a sparkling white frosted fringe. A cracking tulip that looks as though it has just been drawn from the ice bucket.

April/May 15" (38cm)
131-95 £7.50 for 10, £16.80 for 25 or £30.00 for 50

With Mistress (which might seem a bit unconventional?), or anything else!

LAMBADA

A fringed apricot - rose coloured tulip with perhaps a hint of orange as well. A bit shorter with a smaller head.

April/May 18" (45cm)
131-151 £6.50 for 10, £14.60 for 25 or £26.50 for 50

With Sunny Prince, Artist or Brownie

PACIFIC PEARL

Gorgeous against the light when the richness of the colour shows at its best, and the frilly edge means that you can mix them with any of the other unfringed ones and find that they complement each other hugely.

April/May 18" (45cm)
131-152 £6.50 for 10, £14.60 for 25 or £26.50 for 50

With Lambada, Honeymoon or City of Vancouver

VIRIDIFLORA TULIPS

(Group 8) Multi-coloured tulips with vertical colour banding, most often in green. Some of these exhibit complicated colour patterning, like an artist's mixing palette. In the borders they provide great opportunities to create subtle combinations.

ARTIST

Shorter in stature, one of the early forms of viridiflora with salmon and green coloured petals.

April/May 12" (30cm)
131-155 £7.50 for 10, £16.80 for 25 or £30.00 for 50

With Lambada, Greenstar or Mistress

SPRING GREEN

Pale apple-white petals marked with wispy green brush strokes on the back of each petal. Often less 'regular' in height and flower shape compared to many other tulips but ideal for separating strong colours in the border or for flower arranging. One of the all-time favourites.

April/May 18" (45cm)
131-51 £6.50 for 10, £14.60 for 25 or £26.50 for 50

With everything, and they all look better for it!



Tulipa Angelique



Tulipa Brownie



Tulipa La Belle Epoque



Tulipa Backpacker



Tulipa Foxtrot



Tulipa Orange Princess

DOUBLE PETALLED TULIPS

(Group 11) Also known as the *Paeony* flowered forms. These tend to be late flowering with more spherical buds and rounded flower shapes, filled with deep layers of petals.

ANGELIQUE



Often multi-headed, the flowers filled with ruffled petals in delicate shades of pink, genuinely paeony-like from a distance, somewhat shorter in stature than most. Late flowering beauties for borders as well as cut flower.

April/May 16" (40cm)
131-24 £7.50 for 10, £16.80 for 25
or £30.00 for 50



With Backpacker or Hemisphere

BACKPACKER

I have been looking for a better tulip than Blue Diamond, the colour of which is fantastic, but the stem is less strong. These seem to be better and are nearly the same hue, a mauve through to violet purple pom pom.

April/May 18" (45cm)
131-157 £7.50 for 10, £16.80 for 25
or £30.00 for 50



With Angelique, La Belle Epoque
or Unique de France

BROWNIE

A coppery coloured double with a relatively short stem which is advantageous as the heads become heavy with any rain and so long stemmed doubles tend to bend a lot.

April 14" (35cm)
131-169 £10.00 for 10, £22.50 for 25
or £41.00 for 50



With Foxtrot, Queen of Night or Firework

FOXTROT

An early flowering double in old rose pink which deepens in colour as the flowers age. Tidy and neat and much earlier than the similar Angelique.

April 12" (30cm)
131-147 £6.50 for 10, £14.60 for 25
or £26.50 for 50



With Sunny Prince, Havran or
Orange Princess

LA BELLE EPOQUE

Another colour that is difficult to describe: pinkish or even pale tea-rose coloured, turning more apricot as the flower develops, a more subtle colour that goes well with the pinks and lilacs that are often prevalent in tulips. In short supply.

April/May 18" (45cm)
131-104 £10.00 for 10, £22.50 for 25
or £41.00 for 50



With Ballerina, Brownie or Sanne



ORANGE PRINCESS



I was tempted to list this alongside Prinses Irene, it is after all a double form of that favourite tulip. But being a double this is where it fits best and if you love the single form you will recognise the similarity and perhaps be tempted to try them? I find the encircling green tipped petals rather appealing.

April/May 16" (40cm)
131-140 £10.00 for 10, £22.50 for 25
or £41.00 for 50



With Firework, Calgary Flames or
Annie Schilder



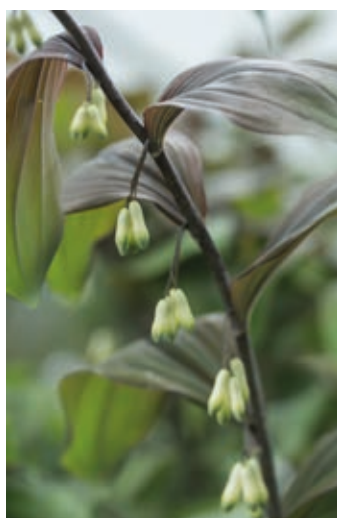
Scilla peruviana



Polygonatum X hybridum



Iris X Apollo



Polygonatum Betberg



Polygonatum odoratum flore pleno



Polygonatum curvistylum



Iris Blue Magic

SCILLA

Most of the Scillas flower a lot earlier and are listed in their flowering sequence back on page 13, however one member of the family stands out as being later flowering

PERUVIANA

Suffering from an unfortunate confusion when they first arrived which led to their unlikely name (they are of Mediterranean origin) the low broad, fleshy, near evergreen leaved plants produce a big architectural flower head of bright blue flowers, especially dramatic in bud. Easy in good soil but they must be in full light and planted deeply, they do also flower better in the spring following a warm summer.

May/June 10" (25cm)
125-11 £4.90 or £14.00 for 3

POLYGONATUM

The Solomon's Seal family. Hardy perennials that grow in most situations pretty much without any attention, preferring moisture-retentive, heavier soils best of all. They do get quite a bit taller in shade. Their only downfall is their appeal to the Gooseberry Sawfly caterpillar which strips the leaves in June in some gardens. There is now an organic nematode spray available against them.

BETBERG

Named after the German village in the Black Forest near Laufen where it was first found. The stems and leaves a dark chocolate brown when they emerge (as long as they get direct sunlight), against these the white flowers are a marked contrast. As the season progresses the leaves become more olive green. Slow to increase for us, we are probably too dry for them.

April/May 24-30" (50-75cm)
37-16 £12.00

CURVISTYLUM

Dark stemmed plants with narrow purple tinted foliage and mauve waisted bell shaped flowers in whorls at each leaf axil. Graceful yet tough in sun or part shade.

June 30" (75cm)
37-10 £11.00 for 3

X HYBRIDUM

The naturally occurring hybrid between P. multiflorum and P. odoratum with gracefully arching stems and pendant jade green and ivory flowers. Increasing slowly but steadily to form a thicket. A great screen in damp, moist shade. The stems cut well for flower arrangements when you have plenty.

May/June 24-36" (60-90cm)
37-04 £6.50 for 3 or £12.00 for 7

ODORATUM FLORE PLENO

The rarer double flowered form which when in flower requires one to turn the flowers over to check out the tidy cones within cones.

May 18" (45cm)
37-12 £8.00 for 3

IRIS X HOLLANDICA

These are hybrid forms of Iris xiphium that florists use lavishly in the late spring and summer, but the bulbs are reasonably inexpensive and you could easily grow your own? In the garden they are likely to last far longer than cut flowers too! These would be planted 4-6" (10-15cm) apart in sunny conditions and in lighter soils.

APOLLO

On sturdy plants the broad yellow falls (the three lower parts of the iris flower looking like a tongue) the colour of free range egg yolks contrast with the creamy white, even blue tinted, standards (the three upright parts).

May/June 18-24" (45-60cm)
99-04 £3.30 for 7 or £6.50 for 15

BLUE MAGIC

A deep violet-blue flower with a yellow signal marking (edged in white) on the lower petals. They increased well at the RHS trials and were awarded an AGM.

May/June 18-24" (45-60cm)
99-12 £3.30 for 7 or £6.50 for 15



Iris Lion King



Iris Red Ember



Mathiasella bupleuroides Green Dream



Ornithogalum nutans



Iris Professor Blaauw



Iris Silvery Beauty



Ornithogalum magnum Moskou



Ornithogalum pyrenaicum

LION KING



Deep reddish violet and greeny-brown petals, a combination that should sound pretty enticing? Dark leaved as well providing additional contrast, late flowering. Slightly smaller bulbed than the other forms.

June 18-24" (45-60cm)
99-13 £3.00 for 7 or £5.80 for 15

PROFESSOR BLAAUW



The deepest of rich blues with a yellow flash. You should really expect two flowers per stem, and will observe the pregnant swelling of the buds within the stems before they burst open.

May/June 18-24" (45-60cm)
99-08 £3.30 for 7 or £6.50 for 15

RED EMBER

Rust coloured, though in some lights they also have a deeper tinge of purple on the standards, altogether an unusual hue. Recommended at the trial of these bulbs at Wisley

May/June 18-24" (45-60cm)
99-10 £3.30 for 7 or £6.50 for 15

SILVERY BEAUTY



Simply fresh and somehow a bit 'lighter' this is probably my favourite form with white and pale violet flowers above leaves that display the silvery sheen implied in the name. Roundly admired at Wisley.

May/June 18-24" (45-60cm)
99-11 £3.50 for 7 or £7.00 for 15

MATHIASSELLA

A Mexican umbellifer which was first described only in 1954. These are architectural plants and seem to do well in full sun or part shade with green foliage in spring, and in autumn pink and purple tints. They are sterile and consequently last for several months in flower, lime green when they first open but coloured with purple later in the year.

BUPLEUROIDES GREEN DREAM

Unfamiliar plants to many which look to have some of the characteristics of some other well known garden plants - Hellebores, Angelica and maybe even Euphorbia, so one can see how these have become desirable. Plants from 9cm pots that ought to settle in this winter and flower in 2021.

May 24" (60cm)
69-04 £8.50

ORNITHOGALUM

The 'Star of Bethlehem' family. Silvery white and green flowered and generally tough and accommodating, many are perfect for naturalising.

MAGNUM MOSKOU

I have these successfully growing in some rough (late cut) grass to follow some Camassias and they are doing well, but they could also add to a border. Tall, white flowered with dozens of flowers circling a stiff stem.

June 24" (60cm)
117-16 £5.70 for 3

NUTANS



Very pretty, soft silvery grey-green flowers, bluebell-like in stature and long lasting when picked. They probably should be grown in light shade. If dry or stressed in May the foliage tends to naturally begin to yellow at flowering time. Plant irregularly, about 3" (8 cm) apart, 10-15 per square foot.

May 9" (22cm)
117-09 £3.75 for 15 or £7.00 for 30

PYRENAICUM

Tall, slim, waving wands tipped with starry pale green flowers. A naturalised native in the area of Bath, and hence called the 'Bath Asparagus'. Easy to grow in free draining limey soil, planted 12" (30cm) apart.

June 18" (45cm)
117-11 £11.00 for 3

Flowering time	Flowering height
Item Code	Price



Ornithogalum umbellatum



Anthericum x Paradisea



Allium Ambassador



Anthericum liliago major



Allium angulosum

UMBELLATUM

A sun lover and excellent in thin grass from what are unpromising looking bulbs. Clumps of them in sunny conditions really hug the ground and they are especially useful for carpeting a sunny bank with white in April with their grey-green leaves and white flowers. Plant about 4" (10cm) apart, 10 per square foot.

April/May 4" (10cm)
117-13 £4.50 for 10
or £10.00 for 25

ANTHERICUM

LILIAGO MAJOR



Pretty white flowered perennials from southern Europe. They grow from an agapanthus-like crown of thick fleshy roots when dormant in the autumn, providing for splendid, informal looking plants that thrive in moisture retentive soil in good light. When settled, each plant will carry ten or more flower stems piercing upward each carrying a dozen or more flowers looking like little flared trumpets with yellow stamens, opening sequentially up the stems. Border plants for good fertile soils in the sun. Plant 4" deep and 24" (60cm) apart.

May 24" (60cm)
58-05 £7.00

ANTHERICUM X PARADISEA

We have tried, and failed, to get much help with this oddity. We have grown both Anthericum liliago major and Paradisea lusitanica for a long while and they do not really overlap much in their flowering but have some similarities. We believe them to have created an inter-generic hybrid as these flower between the two. It is much bigger than the Anthericum and earlier and smaller than the Paradisea. If you like the group - and who wouldn't, they are easy, attractive and increasing - maybe you would like to give a division of this (presumed) hybrid a go, and if an expert let us have your views?

May/June 24-36" (60-90cm)
58-06 £7.50 each

ALLIUM

Alliums are always welcome to gardeners in the early summer as the flowers offer height and distinction when most gardens are not quite so colourful. Their exclamation mark shape differentiates them from the plants around them, and those companion plants in turn 'hide' what is sometimes distracting foliage, which (in most of these Alliums) is beginning to yellow at flowering time. They are generally plants of sunny and well-drained soils, and can be used either in dramatic eye-catching sweeps, or else, in a more cottagey style, in isolated small groups to equally good effect. Everyone seems to love Alliums and, knowing that the beneficial insects and bees are struggling nowadays, it is worth a reminder that Alliums provide a fantastic food supply for those insects, especially the late flowering forms. Our beds of A. angulosum, A. glaucum and A. tuberosum shimmer with activity on sunny summer days. Try out a number of different forms to see which do best in your circumstances. The results of a trial over the past 3 years at Wisley have been published in a useful booklet called the RHS Grower Guide on Ornamental Onions.

AMBASSADOR



Beginning to flower in late May these flowers should see one through all of June and into July with very tall stems topped by their mid purple heads about 6" (15cm) across. Very big bulbed plants benefitting from deep planting to ensure that the stems remain firmly upright. Good seed heads follow the main flower show.

June/ July up to 50" (130 cm)
53-60 £6.00 or £15.00 for 3

ANGULOSUM (PYRENAICUM)

Wonderfully easy to grow plants. Bright glossy green leaved with lots of pale lilac flowers in the height of summer when butterflies and hoverflies jostle to feed on them. We supply small clumps to be planted 9" (22cm) apart, in the sun where it is not too dry. Divide them again when they are thick.

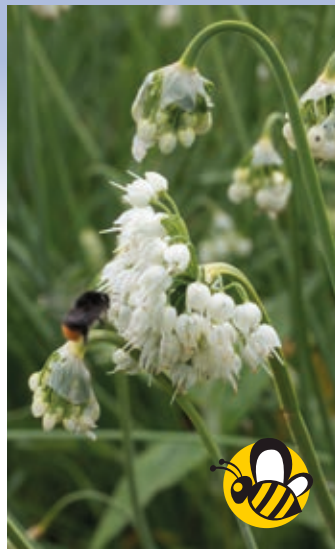
July/Aug 12" (30cm)
53-28 £7.00 for 3
(divisions, not true bulbs)



Insect friendly Plants



Allium caeruleum



Allium cernuum White Master



Allium Early Emperor



Allium Globemaster



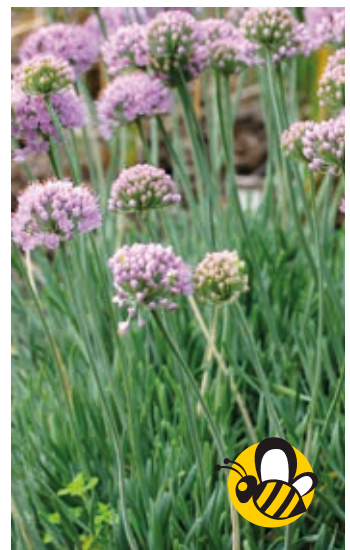
Allium cernuum



Allium cristophii



Allium giganteum



Allium senescens ssp. glaucum

CÆRULEUM

Unusual blue flowered drumstick flowers originating from the steppes of Russia and China. They will do best in a well-drained sunny spot or rocky where the small bulbs can be planted quite closely, only 1-2" (2.5-5cm) apart.

June 18" (45cm)
53-14 £4.90 for 15

CERNUUM

Dainty chandeliers formed of dozens of small claret pink flowers hanging off the nodding stem so the bees have to hang upside down to get at the flowers, sometimes several heads form in a succession. Easy to grow and seeding themselves in lighter soils in the sun. Delivered as fresh dug flowering size plants rather than bulbs.

Summer 18" (45cm)
53-04 £7.50 for 5

CERNUUM WHITE MASTER

The white flowered form of the plant above, just as easy but I suspect that its seed may result in pink and white flowered plants.

Summer 18" (45cm)
53-72 £7.50 for 3

CRISTOPHII

If you only ever buy two or three Alliums, this must be one of them. Sculptural flower heads, initially greenish purple, are gradually transformed as they are pollinated into metallic silvery-violet coloured spheres about 8" (20cm) across, all borne on quite stocky stems. The round melon sized heads naturally complement the purples of rampant geraniums or the spikier silvery blues of Lavender. Buff coloured seed heads follow. Plant them 8+" (20cm) apart in sunny well drained soils in borders or even rough grass, they will also grow in a degree of shade, but will be taller.

June 10-24" (25-60cm)
53-11 £2.70 for 3, £8.20 for 10
or £14.60 for 20

EARLY EMPEROR

The parentage of this hybrid means that while it is still a big flower at about 6" (15cm) across it flowers rather earlier than the other large headed Alliums and it is not quite so tall. The flowers are rosy lilac with contrasting silvery white stamens providing a halo like sheen.

May 30" (75cm)
53-68 £10.00 for 3

GIGANTEUM

Densely filled heads in pale purple the size of a grapefruit top each tall bare stem. A central Asian species requiring well-drained soils and a sunny site, by the time that they flower the leaves have mostly withered away. Its name is a reference to its impressive height rather than to an enormous flower. A seedhead looking like a grass thatched hut remains at the end.

Late June/July 48" (120cm)
53-20 £14.00 for 3

GLOBEMASTER

Probably the best of the large headed Allium hybrids with exceptionally long lasting flowers. The first array is replaced by another second flush of their deep violet-purple flowers. The insects still love to feed on them, although despite their attentions you'll not be left with a remnant seed head as they are sterile. Tidier leaved than most, even at flowering time. Plant them about 12" (45cm) apart in well drained soils in good light. Great planted with Astrantia 'Roma'.

May/June 40" (100cm)
53-46 £5.00 each or £13.70 for 3

SENESCENS SSP. GLAUCUM

Low growing, quite tussocky plants with narrow twisted blue-green foliage. The lilac pompoms which are carried in profusion are adored by the Insects. They need open sunny conditions. These from division.

Summer 12" (30cm)
53-30 £4.00 for 3



Allium hollandicum



Allium karataviense Ivory Queen



Allium Mount Everest



Allium hollandicum Purple Sensation



Allium hyalinum

HOLLANDICUM

Best for bigger gardens, or wherever you might want a more subtle and textured display. These provide that irregularity in colour, height, size and maturity which adds subtlety and charm to any planting, especially one on a bigger scale. Deep lilac to pale purple flowers about the size of an orange. Easy in any free draining soil in the sun, planted about 6" (15cm) apart.
May/ June 24-36" (60-90cm).
53-08 £3.80 for 5, £7.00 for 10 or £13.00 for 20

HOLLANDICUM PURPLE SENSATION

An intensely deep purple coloured strain, with heads the size of small oranges. Another of that select group of those 'must have' Alliums. They provide purple polka dots to your planting scheme, adding colour, texture and geometric silhouettes to your borders. Derived from a clone these should all be the same hue. The RHS trial report said of them: "an excellent performance and is reliably perennial".
May/ June 35" (90cm)
53-09 £4.20 for 5, £7.80 for 10 or £14.30 for 20

HYALINUM

A species from California where it grows on shady canyon slopes in the Sierra Nevada around 1200m. Star shaped flowers in pale pink with needle like grey leaves, but very floriferous. They need good drainage and drier summer rest. Naturally small bulbs (about pea sized) setting lots of seed.
May 12" (30cm)
53-70 £6.00 for 10

KARATAVIENSE IVORY QUEEN

A selected form of A. karataviense. These are similarly very broad leaved and grow close to the ground with a pale margin around the leaf and an apple-white flower. Their best use is in full sun on a raised bed or rockery where the foliage provides a very metallic looking and modern effect long before (and after) the flowers.
May/June 10" (25cm)
53-23 £4.50 for 3 or £12.60 for 9

MOUNT EVEREST

Probably the best tall white flowered Allium. Grapefruit sized heads top a tall glossy green stem. The leaves persist, so are not too obtrusive at flowering time. Lovely when combined with other strong coloured flowers such as Gladiolus byzantinus, and ideally planted against a dark backdrop, though some planted in the dappled shade of a Laburnum are great. We suggest that they are planted about 12" (30cm) apart.
May/June 36" (90cm)
53-43 £10.50 for 3 or £16.50 for 5



Insect friendly Plants



Allium Powder Puff



Allium Pinball Wizard



Allium nigrum Pink Jewel



Allium obliquum



Allium nigrum

NIGRUM (MULTIBULBOSUM)

Greeny-black ovaries in the centre of each floret provide the reason for the name, though the suggestion of blackness somehow does not sit so well on what is otherwise a creamy white flower! The flower head shape is less rounded and more flattened and they are easily grown in sunny well-drained soils with a dry summer rest.

June 24" (60cm)
53-24 £4.20 for 5 or £8.00 for 10

OBLIQUUM

These are Siberian in origin so are incredibly tough despite being in leaf all winter. They never really seem to be fully dormant. Their flowers are the size of large hens' eggs in June when they eventually straighten from their crook like stature to stand erect, greenish-yellow in colour and increasingly 'fluffy'. They set lots of seed as well as forming clumps in time.

June 24" (60cm)
53-26 £9.50 for 3

PINBALL WIZARD

Fully 6" (15 cm) across, these heads are not as densely packed with flowers as those of A. Globemaster, so the effect is rather more 'fluffy' but they are slightly taller with thick weather resisting stems. The flowers are a mid purple and a bit earlier flowering than most, at their best in mid May

May 40" (100 cm)
53-61 £4.50 or £12.00 for 3

POWDER PUFF



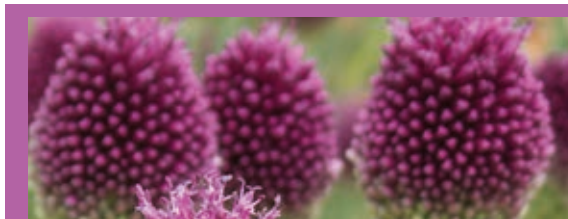
A broad leaved allium with violet purple flowers about the size of a tennis ball held on much shorter stems than would normally be expected for an Allium with this size of head. It is a hybrid between A. nevskianum and A. sarawshanicum, both from Central Asia. Great for windy sites. The RHS trial reported on them that they "bulked up well, one of the best in the trial, great for patios or the front of the border".

May/June 15" (35cm)
53-66 £5.00 for 5

NIGRUM PINK JEWEL

A pale pink form of the plant above, one which was much admired in the earlier Allium trials at RHS Wisley in 2014. Large domed pale pink heads with dark centres.

May/June 36" (90cm)
53-65 £4.00 each



See the stunning
Allium Collection
on page 58



Allium schubertii



Allium stipitatum Violet Beauty



Allium sphaerocephalon



Allium Purple Rain



Allium siculum (Nectaroscordum)

PURPLE RAIN

A product of the cross between A. Purple Sensation (from which it gains its height and deeper colouration) and A. cristophii (which gives it the open structure) with heads about 6" (15cm) across. With such popular and eminent parentage these should be superior and indeed they performed superbly well in the Allium trials at Wisley and were judged "the best in the trial".

June (later than Purple Sensation)
53-67 **34" (85cm)**
£3.80 for 5, £7.00 for 10
or £13.00 for 20

SCHUBERTII

Spectacular and eccentric. Emerging early in the late winter these are at some risk in extreme winters but when planted in a warm sunny garden and given a dry warm summer rest following their flowering they can be fabulous. Like a tumbleweed, the long spokes are what they might roll away on when dry, the seeds held on the shorter extensions. A vegetable explosion or firework caught mid burst!

June **18" (45cm)**
53-31 **£9.00 for 3**

SICULUM (NECTAROSCORDUM)

(Now officially in the Allium family) Tall stemmed (with a pronounced keel – think of the seam in a pair of tights) leading upwards to dozens of hanging green and burgundy marked bells pendulously arranged in a loose head. They enjoy more shade than most true Alliums and seed about in conditions that they like and have strongly garlic scented foliage when crushed. The bees love them. The dry seed heads look like models of multi-turreted fairy castles.

Early summer **30" (75cm)**
53-32 **£3.80 for 5 or £6.90 for 10**

SPHAEROCEPHALON STIPITATUM VIOLET BEAUTY

Butterflies love these egg shaped heads (and at their peak they are about the same size). They emerge as tight deep green buds in June, turning purple from their tips through July and swaying in the summer breezes on long wiry stems. Woven through a summer border, often as rivers of colour, they visually 'tie things together'. Easy and inexpensive for the effect that they provide, just do plant enough of them for a generous display. We always supply bigger bulbs than are generally available, ensuring that the flowering will be better as a result. Plant them 3" (7cm) apart or 10-15 per square foot.

Summer **24" (60cm)**
53-33 **£6.50 for 15, £12.00 for 30**
or £18.50 for 50

A dusty violet colour with flowers 4" (10cm) in diameter, spherical except that the base is flattened. This one also did exceptionally well in the RHS Allium trial where its usefulness as a cut flower (it has a light fragrance) and its increase over the three years of the trial impressed.

May/June **27" (70cm)**
53-71 **£3.80 for 5 or £7.00 for 10**



Allium tuberosum



Dichelostemma congestum



Ixiolirion tartaricum (ledebourii)



Allium tripedale (Nectaroscordum)



Allium unifolium



Pimpinella major rosea

TRIPEDALE (NECTAROSCORDUM)

Like N. siculum above, but with more numerous flowers in a gorgeous soft pink, which emerge like hatchlings from their translucent sheath. Happy in sun or part shade and not as difficult to grow as the price may suggest, but uncommon and very select. Persistent and increasing in our heavy loam in some summer shade. How should one say the name? I am not sure, but hope that it should be 'tripi- dali' rather than 'tripe-dale'.

June 36" (100cm)
53-25 £6.50 for 3 or £14.00 for 7

TUBEROSUM

As much a herb as a bulb (as are chives) but with a long flowering period through the summer, the white flowers displayed over lush foliage on very wiry stems which persist as dry straw-like markers through the winter. They are multifaceted plants, and brilliant insect feeding stations too.

Aug/Oct 24" (60cm)
53-38 £7.00 for 3 (small clumps)

UNIFOLIUM

Shell pink heads of quite papery and long lasting flowers, about 15 contained within each head. Easy to grow in any sunny and well drained spot, especially the rocky. The small bulbs should be planted quite close together where their massed effect is very attractive.

May 10" (25cm)
53-40 £5.00 for 30

IXIOLIRION

TARTARICUM (LEDEBOURII)

Originally from the steppes of Central Asia, the grass-like foliage hides flowers which become more star like as they open more widely. The colour varies slightly from violet-mauve to lilac. Free draining soil in a sunny situation would suit them best and they look better with quite close planting.

May 9" (20cm)
104-04 £3.50 for 10 or £8.00 for 25



PIMPINELLA

MAJOR ROSEA

Cow Parsley - like plants with flat flower heads comprising of many tiny pale pink flowers over several weeks in late spring through to early summer. Best in a little shade and in soils that are not too dry. A clump forming hardy perennial. Plants in 9 cm pots.

May - June 24-36" (60-90cm)
28-01 £5.50

DICHELOSTEMMA

Allium-like bulbs of North West America with nice stories to go with them. They are obviously very unusual plants to be found in UK gardens but they are hardy and tough enough to grow in lighter and free draining soils. They grow much as any Allium but flower later. The sap from cut stems can be caustic to the skin.

CONGESTUM

From the far west of America, producing a compact, hens egg sized flower head much like an Allium, formed of very long-lasting lilac-purple flowers, on a slender but very wiry stem. They will grow where one would expect Alliums to thrive.

June 24" (60cm)
82-04 £3.50 for 5 or £6.50 for 10



**Insect friendly
Plants**

Flowering time Item Code	Flowering height Price
-----------------------------	---------------------------



Dichelostemma Pink Diamond



Paradisea lusitanica



Disporum flavens



Dichelostemma ida-maia



Disporopsis pernyi



Triteleia Corrina

IDA-MAIA

Spectacular red, yellow and green coloured flowers, shaped like cigars, opening at the tip of a wiry stem. Named after the daughter of a Californian stage coach-driver and pollinated (in the wild) by humming-birds! Grown much as any Allium.

June 18" (45cm)
82-05 £3.50 for 5 or £6.50 for 10

PINK DIAMOND

A naturally occurring sport of D. Ida-maia with bright pink flowers with white tips.

June 18" (45cm)
82-06 £3.50 for 5 or £6.50 for 10

PARADISEA

LUSITANICA

This species comes from Northern Portugal and Spain where it grows in damp meadows. Dormant their thickened fleshy roots look a bit like those of a dormant Agapanthus crown. In flower they provide elegant spires of bright white flowers providing impressive uprights in the herbaceous border, and a great accompaniment to the Alliums. Supplied as fresh dug divisions, to be planted 4" (10cm) deep in moisture retentive soil in sun or part shade.

June 36-48" (90-120cm)
140-04 £6.50 each or £17.00 for 3

DISPORUM

UNIFLORUM (FLAVENS)

Solomon's Seal -like plants with soft yellow flowers at the ends of their stems in the spring. Korean in origin they are not very well known but understated plants for shade.

June 18-24" (45-60cm)
30-06 £6.00

DISPOROPSIS

Similar to the Solomon's Seal in that the flowers emerge at the leaf axils along the stem, and are also shade lovers, however these are scented, the Solomon Seals are not. They are very hardy plants of the Far East.

PERNYI

These carry perfumed white bells, often in pairs up the speckled stems. The foliage is nearly evergreen and we cut out all the stems from the past year in the late spring in order to tidy up the clumps.

May/June 18" (45cm)
36-04 £6.30 for 3

TRITELEIA

Early summer flowering bulbs, also known in the past as Brodiaëa but now more accurately Triteleia. They come from north-west America. So often we are told that they look like miniature Agapanthus, to which they are unconnected. Their papery flowers are a lasting pleasure, with up to 25 flowers per stem. Plant in well-drained soil – in good light, 4" (10cm) deep and 2" (5cm) apart.

CORRINA

A dark flowered form, creating a haze of deep blue when viewed from a distance. Wiry stemmed and a deep blue that anticipates the Agapanthus season to come.

June 18" (45cm)
68-06 £3.00 for 15 or £4.50 for 25



Triteleia Rudy



Triteleia Foxy



Gladiolus byzantinus



Triteleia Silver Queen



Gladiolus Atom



Gladiolus Nathalie

RUDY

The same shape and stance as T. Corrina but white flowered with a broad violet blue stripe down the centre of each petal. Very eye-catching and 'different' with a long vase life for when you feel that you have enough to pick.

June 18" (45cm)
68-07 £3.50 for 5 or £9.30 for 15

FOXY

White flowered with a purple blue marking up the centre of each petal, effectively more striped than Rudy which shows more blue. Carol Klein loved them at the Gardeners' World Show in 2017.

June 18" (45cm)
68-15 £4.50 for 5 or £12.50 for 15

SILVER QUEEN

White with a green rib, perfect for the garden, or to use as cut flower? Just the thing to plant in a sunny border ahead of a summer wedding, given a bit of advance warning?

June 18" (45cm)
68-13 £3.50 for 5 or £9.30 for 15

GLADIOLUS

BYZANTINUS

Rich magenta coloured flowers with white flashes. These are free flowering plants with large strongly coloured flowers, and generally infertile as the plant is tetraploid. They are lovely, persisting colourful cottage garden plants for the early summer, but the leaves do emerge early in the year and in very cold gardens (or in the north) they may need a mulch over winter. There is skulduggery about regarding what is sold under this name. A poor relation to what we sell is G. byzantinus ssp. communis which is often passed off as the same plant and is a good deal cheaper. The two are like chalk and cheese. For sun or slight shade. Plant 4" (10cm) apart.

June 24" (60cm)
88-04 £5.00 for 5 or £14.00 for 15



The 'named' dwarf gladioli flower in the early summer. Short enough not to need staking, they do not tower over the garden as do the larger forms. These make particularly good cut flowers too. They also grow away early, and this may result in the foliage being susceptible to severe late frost, so mulching is a possible requirement in very cold gardens. Plant them in a sheltered site in well-drained soil, 6" (15cm) deep, 4" (10cm) apart on a bed of sharp sand. The winter dormant hybrid forms are also sold in the spring, if yours is a cold garden buy them then instead.

ATOM

Dusty orange-red flowers, each petal margin enriched by white piping, which highlights their individual shape. This is particularly effective where the petals overlap one another. Best in well drained soils and in the sun.

July 30" (75cm)
88-18 £6.50 for 10 or £12.00 for 20

NATHALIE

Predominantly pink flowered with the bottom petals on each marked with a darker rose and cream coloured flash, pretty and easy to fit into the summer colour theme.

July 30" (75cm)
88-19 £6.50 for 10 or £12.00 for 20

Need bigger quantities of our bulbs?

There are occasions when our pack sizes are unsuitable for bigger projects or large gardens. If this is the case do email us for a specific quotation for your requirements. We do not do a 'trade' list. You'll get the same quality of bulbs as all our retail customers.



Gladiolus Nymph



Lilium martagon Snowy Morning



Lilium candidum



Lilium martagon Claude Shride



Gladiolus The Bride

NYMPH

White flowered, but clearly marked with luscious pink and purple lipstick kisses on the lower petals. Much less formally upright, the bigger flowers bending the stems this way and that, so they weave through surrounding plants with an appealing informality.

May/June 24" (60cm)
88-11 £6.50 for 10 or £12.00 for 20

THE BRIDE

Starry, tapered, gleaming white flowers tinged with green at the throat, a strong-growing favourite of ours and our customers. Do ensure that the soil is well drained and if you have failed before, try them again planted in deep pots protected from the worst of the cold till spring and then plant these out into your sunny border.

June 18" (45cm)
88-06 £6.50 for 10 or £12.00 for 20

LILIUM

Lilies would have to come near the top of any list of most gardeners' favourite bulbs. For stature, grace and perfume they are unbeatable, but to ensure longevity it helps to get things right. Unless it says otherwise (in the text below) do incorporate plenty of organic matter in the area to be planted, having chosen a site that is of good, probably rich soil, not too dry in summer, and possibly shaded – many lily flowers will last longer in cooler shade. Plant at least 5" deep (except L. candidum). If planting in the confinement of a container, try to ensure regular watering. Lily beetle are a problem in warmer parts. Readily seen as red and black beetles they eat any foliage of the Liliaceae (which includes the Fritillaria). These beetles drop off and hide on the ground if you alarm them, but sneakily picking off the adults and cleaning the messy black 'eggs' off the foliage is moderately effective (and squashing them satisfies a lust for

retribution) although Provado used systematically seems to reduce future generations more effectively. Please Note: The martagon lilies are usually not ready for despatch till mid-October so if you include them on your order it may affect the delivery time of your whole order (we do try to save costs and have your order all come at once)...

CANDIDUM

The 'Madonna Lily' often depicted as a religious icon in early Christian paintings. Large, loose scaled and slightly shaggy bulbs are typical of this plant. They grow away early and bulbs may already have begun to leaf up before they are despatched. Satin white flowered with a delicious fragrance. They need shallow planting in a warmer sunny spot and seem to do better in relatively poor soil (also available from the Late Summer Section, on page 5). Best ordered before mid September.

June 36" (90cm)
107-14 £7.50 or £20.00 for 3

MARTAGON

The species plants from which these derive (and which are more variable) is now not grown commercially in Europe and we have had to withdraw them from sale. These listed below are grown by micro propagation initially so will be identical plant to plant.

MARTAGON CLAUDE SHRIDE

A dark mahogany red selection of the martagon lily with yellow fleckling at the throat.

June/July 36" (90cm)
107-41 £6.00 or £18.00 for 3

MARTAGON SNOWY MORNING

Pure white with extended orange anthers.

June/July 36" (90cm)
107-47 £6.00 or £18.00 for 3



Liliium martagon Sunny Morning



Liliium regale



Maianthemum bifolium



Asclepias tuberosa



Bomarea salsilla

MARTAGON SUNNY MORNING

Golden orange flowered plants with deeper mahogany speckles.

June/July 107-45 36" (90cm)
£6.00 or £18.00 for 3

REGALE

Familiar and much loved favourites with ivory-white trumpets, flushed with pink on their backs, providing great wafts of beautiful scent.

Accommodating in most gardens, either in borders or large deep pots. Autumn planted L. regale bulbs always seem to do better than spring planted ones. With longer to root over the winter before they flower that would be logical?

July 107-04 36" (90cm)
£10.00 for 3

MAIANTHEMUM

BIFOLIUM

An unusual native of northern England. Plants with leaves that look a bit like small Hostas. These are plants for shade with ground covering possibilities in nice, leafy, damp, dappled shade where they can then form a dense mat. The leaves open in the spring with a welcome fresh greenness growing from the small wiry roots. The flowers are like small white plumes.

May 110-04

4" (10cm)
£4.50 for 5

ASCLEPIAS

TUBEROSA

From the eastern USA where it is known as the Butterfly Plant or Milkweed this is a plant of sunny and dry conditions where its flowers last ages. So far, and reports from others confirm, it seems perfectly hardy here, though those growing it in cold gardens may need to take more care. Pot grown plants (intended for Hampton Court in July 2020!)

June/July 190-01

18" (45cm)
£4.50

BOMAREA

SALSILLA

Mexican and South American climbers that one might imagine require protection from severe cold, but recent winters here have left them untouched, buried as they are deep in the ground. Long lasting pink flowers crowd on the ends of thick tangled stems with quite succulent foliage, sometimes the heads look down, or up, but never the same way! They seem happy with either full sun or part shade but you will need to provide support for them to grow over.

Summer flowering 10-04 30" (70cm)
£5.50

INDEX

Autumn availability unless:



Late Summer only



Late Summer or Autumn

Acis	1	Bomarea	51	chrysanthus Dorothy	9	elwesii	25
autumnalis	1	salsilla	51	chrysanthus Prins Claus	9	imperialis lutea	26
Allium	42	Bongardia	23	imperati de Jager	9	imperialis Rascal Chopin	26
Ambassador	42	chrysogonum	23	minimus Spring Beauty	9	imperialis William Rex	26
angulosum (pyrenaicum)	42	Camassia	24	tommasinianus Ruby Giant	10	meleagri	26
cæruleum	43	Blue Heaven	25	tommasinianus Whitewell Purple	10	michailovskyi	26
cernuum	43	leichtlinii alba	24	tommasinianus Yalta	10	pallidiflora	26
cernuum White Master	43	leichtlinii Avon's Stellar hybrids	25	(vernus) heuffelianus Harry Hay	10	persica	27
cristophii	43	leichtlinii caerulea	24	Crocus vernus 'Dutch' hybrids		persica alba	27
Early Emperor	43	leichtlinii caerulea Maybelle	24		10	pontica	27
giganteum	43	leichtlinii Sacajawea	25	Flower Record	10	raddeana	27
Globemaster	43	leichtlinii semi-plena	25	Golden Yellow	10	Gladiolus	4/49
hollandicum	44	quamash (esculenta)	25	Jeanne D'Arc	10	Atom	49
hollandicum Purple Sensation	44	Chionodoxa	12	Pickwick	11	byzantinus	49
hyalinum	44	forbesii Blue Giant	13	Queen of the Blues	11	Nathalie	49
karataviense Ivory Queen	44	forbesii Pink Giant	12	Remembrance	11	Nymph	50
Mount Everest	44	luciliæ	12	Cyclamen Autumn flowering		The Bride	50
nigrum (multibulbosum)	45	Colchicum	1	forms	5	tristis	4
nigrum Pink Jewel	45	agrippinum	1	hederifolium	5	Hacquetia	16
obliquum	45	autumnale	1	hederifolium Silver Leaf	5	epipactis	16
Pinball Wizard	45	autumnale album	1	Cyclamen Spring flowering		Hippeastrum	4
Powder Puff	45	byzantinum Innocence	1	forms	6	x acramannii	4
Purple Rain	46	speciosum	1	coum	6	Hyacinthoides	24
schubertii	46	Water-Lily	1	coum album	6	non scripta	24
senescens ssp. glaucum	43	Convallaria	28	coum dark pink	6	non scripta alba	24
siculum (Nectaroscordum)	46	majalis Bordeaux	28	coum roseum	6	non scripta alba bracteata	24
sphærocephalon	46	majalis Fernwood's Golden Slippers	28	coum Silver Leaf	6	non scripta rosea	24
stipitatum Violet Beauty	46		28	repandum	6	Hyacinthus	17
tripedale (Nectaroscordum)	47	majalis Fortins Giant	28	Cypripedium	4	Carnegie	17
tuberosum	47	majalis Hardwick Hall	28	Gisela	4	Delft Blue	17
unifolium	47	majalis Hofheim	28	Dichelostemma	47	Gipsy Queen	18
Amaryllis	2	majalis rosea	28	congestum	47	Gloria Mundi	18
Avon's belladonna hybrids	2	Corydalis	27	ida-maia	48	multiflora white	18
X Amarygia parkeri alba	2	flexuosa Blue Dragon	27	Pink Diamond	48	multiflora Anastasia	18
Anemone	14	flexuosa Blue Panda	27	Disporopsis	48	Woodstock	18
apennina	14	flexuosa China Blue	27	pernyi	48	Ipheion	18
blanda blue	14	Crocus (autumn flowering		Disporum	48	Castillo	18
blanda Pink Star	14	forms	2	uniflorum (flavens)	48	uniflorum Charlotte Bishop	18
blanda White Splendour	14	boryi	2	Erythronium	16	uniflorum Froyle Mill	19
nemorosa	14	goulmyi	2	dens canis	16	Iris (other types)	19
nemorosa bracteata	14	ligusticus (medius)	2	dens canis Old Aberdeen	16	bucharica	19
nemorosa Stammheim	15	sativus	3	dens canis Snowflake	16	Iris Dwarf (Reticulata)	11
nemorosa virescens	15	speciosus	3	Pagoda	17	Harmony	11
ranunculoides	15	speciosus albus	3	revolutum	17	histrioides Lady Beatrix Stanley	11
Anthericum	42	tournefortii	3	revolutum Knightshayes Pink	17	Katharine's Gold	11
Anthericum x Paradisea	42	Crocus (spring flowering)	9	tuolumnense	17	Katharine Hodgkin	11
liliago major	42	chrysanthus Ard Schenk	9	White Beauty	17	Pauline	12
Asclepias	51	chrysanthus Blue Pearl	9	Fritillaria	25	Pixie	12
tuberosa	51	chrysanthus Cream Beauty	9	acmopetala	25	Purple Hill	12

Spot On	12	Julia Jane	20	Sternbergia	2	Havran	33
Iris unguicularis (Stylosa)	6	Martinette	20	lutea angustifolia	2	Hemisphere	33
Marondera	6	Minnow	20	Tecophilaea	3	Jan Reus	34
Mary Barnard	6	More and More	20	cyanocrocus leichtlinii	3	Mistress	34
unguicularis	7	moschatus	20	cyanocrocus violacea	3	Negrita	34
unguicularis alba	7	obvallaris	21	Triteleia	48	Paul Scherer	34
Walter Butt	6	Oxford Gold	21	Corrina	48	Prinses Irene	34
Iris x hollandica	40	Pipit	21	Foxy	49	Sanne	34
Apollo	40	poeticus recurvus	21	Rudy	49	Sunny Prince	35
Blue Magic	40	Rijnveld's Early Sensation	21	Silver Queen	49	Unique de France	35
Lion King	41	Sailboat	21	Tropaeolum	4	Tulips (Parrot)	35
Professor Blaauw	41	Segovia	21	tricolor	4	Black Parrot	35
Red Ember	41	Silver Chimes	22	Tulips (Double Petalled)	39	Rococo	35
Silvery Beauty	41	Sir Winston Churchill	22	Angelique	39	White Parrot	35
Ixiolirion	47	Sweetness	22	Backpacker	39	Tulips (Single Late)	35
tartaricum (ledebourii)	47	Tete-a-tete	22	Brownie	39	Angel's Wish	35
Leucojum	23	Thalia	22	Foxtrot	39	Antoinette	36
æstivum Gravetye Giant	23	Topolino	22	La Belle Epoque	39	City of Vancouver	36
Lilium	5/50	Toto	22	Orange Princess	39	Queen of Night	36
candidum	5	W. P. Milner	23	Tulips (Fosteriana)	31	Tulips (species)	29
candidum	50	White Lady	23	Exotic Emperor	31	bakeri Lilac Wonder	29
martagon Claude Shride	50	Ziva (Paperwhite)	23	Flaming Purissima	31	batalinii Bronze Charm	29
martagon Snowy Morning	50	Nerine	2	Orange Emperor	32	batalinii Honky Tonk	29
martagon Sunny Morning	51	Nerine flexuosa alba	2	Purissima	32	batalinii Salmon Gem	29
regale	51	Ornithogalum	41	Tulips (Fringed Tulips)	38	clusiana Cynthia	29
Maianthemum	51	magnum Moskou	41	Cummins	38	clusiana Peppermintstick	29
bifolium	51	nutans	41	Honeymoon	38	humilis Lilliput	30
Mathiasella	41	pyrenaicum	41	Lambada	38	humilis Persian Pearl	30
bupleuroides Green Dream	41	Umbellatum	42	Pacific Pearl	38	linifolia	30
Muscari	15	Paradisea	48	Tulips (Lily Flowered Tulips)	36	Little Beauty	30
aucheri Blue Magic	15	lusitanica	48	Ballerina	36	Little Princess	30
aucheri White Magic	15	Pimpinella	47	Elegant Lady	36	praestans Shogun	30
azureum	15	major rosea	47	Firework	36	sprengeri	30
Baby's Breath (Jenny Robinson)		Polygonatum	40	Fly Away	37	sylvestris	31
	15	Betberg	40	Greenstar	37	tarda	31
botryoides Album	16	curvistylum	40	Madalyn	37	turkestanica	31
macrocarpum Golden Fragrance		X hybridum	40	Merlot	37	whittallii	31
	16	X hybridum flore pleno	40	Pieter de Leur	37	Tulips (Viridiflora)	38
Valerie Finnis	16	Scilla	1/13/40	Trés Chic	37	Artist	38
Narcissus	5	autumnalis	1	White Triumphator	37	Spring Green	38
cyclamineus (13)	5	bifolia	13	Tulips (Mid Season Tulips)	32	Uvularia	23
Paperwhite Ziva (8)	5	bifolia alba	13	Annie Schilder	32	grandiflora	23
Narcissus (Daffodils)	19	bifolia rosea	13	Barcelona	32		
Desert Bells	19	lilio-hyacinthus	13	Brown Sugar	32		
Elka	19	lilio-hyacinthus alba	13	Calgary	32		
Exotic Mystery	19	mischtschenkoana (tubergeniana)		Calgary Flames	33		
February Gold	20		13	Couleur Cardinal	33		
fernandesii var. cordubensis	19	peruviana	40	Flaming Flag	33		
Hawera	20	siberica Spring Beauty	13	Grand Perfection	33		

Some features of our website that you may not yet know about?

If you have seen a plant, or read about it somewhere and want to order it, but it is '**Out of Season**' you can '**Register an Interest**' by putting in your email address and the next time that we have that plant ready to order you'll get an email to say that you can look again with a view to ordering that item.

There is also a **Quick Order Form** function. If you have found items that you wish to order in the catalogue you just need to put their code number (as printed alongside every item in the catalogue ie Iris bucharica 103-09) into the **Search** field and then go to the **Selection Option** (below that) to be shown the pack sizes which you might order and then **Add** them. Once you have completed your list go to **Add items to your basket** and they will do just that. Easy!

You can buy our Gift Tokens through the website: Just click on **Shop** to access the **Gifts and Vouchers** section where you can make an order. The recipient can equally easily redeem the voucher that will be sent to them against a purchase, either on the website by phone or even at a flower show that we attend.



Mesh Pots

We have long suggested the use of aquatic baskets to contain special bulbs in the garden. This helps to keep them from 'wandering', means that you can move them all at once without excessive disturbance (and your own home-made lid) offer protection from pests.



Something New!

The plants within can root out into the surrounding soil but not escape. Good for small bulbs and special snowdrops. These are rugged and long lasting pots from the Finofil range.

We can offer 2 sizes, both cylindrical:

668-02 14 cm diameter x 10 cm deep (1 litre)
669-03 23 cm diameter x 13 cm deep (3.5 litre)

3 for £4.00
£2.00 each or 3 for £5.00

ORDERING FROM AVON BULBS

This catalogue covers the period July 2020 to December 2020. It costs £2. Prices are given at the end of each plant description; prices are for a single bulb or plant unless stated otherwise.

PLEASE LIST ACCEPTABLE ALTERNATIVES

All plants and bulbs are offered subject to availability. Stocks we anticipate being saleable as we write the catalogue in April sometimes fail before their due despatch season in Sept - Nov, but that's gardening. We do not make substitutions, but a list of alternative bulbs that might be acceptable helps greatly.

PAYMENT

Please order by post and send your payment with your order with cheques made out to Avon Bulbs Ltd. "Not To Exceed" (NTE) cheques are a convenient and safe way to allow for slight variations in your order — particularly useful for late orders where availability is less certain, after 1 September. Make the cheque out as usual and sign it but do not date it or complete the value in words or in figures. At the top of the cheque write "Not to exceed £X", where X is a round number of pounds that is likely to be enough. Once your order has been sent, we complete the date and amounts to match the amount invoiced (and supplied), bank the cheque and your account is settled. Completed cheques (ie not NTE cheques) are banked as orders are accepted.

PAYING BY CARD: POINTS TO NOTE

We normally debit your account when bulbs are despatched, not when your order is received, so do try to ensure that your card does not expire before the date when we will need to draw from the account.

PLEASE ALLOW FOR P&P

The contribution towards packing and delivery is £4.95 per order (mainland UK). It is likely that for larger orders this will be exceeded by costs to ourselves. Orders to mainland UK for any season over the value of £100 P&P is waived. You will however receive an acknowledgment, individual planting instructions for all items, a strong box and further catalogues from us whilst you continue to order. For customers with addresses outside the UK mainland (Channel Isles, Northern Ireland, Isles of Wight, Man, Shetlands etc.) we will probably need to add a surcharge dependant on the weight of the parcel and your location, this sometimes takes the cost of a parcel (or two if we split the delivery) to about £15.00.

PLEASE RETAIN OUR ACKNOWLEDGEMENT

We acknowledge all orders by post or email unless the order is to be despatched immediately. If you need to contact us about your order, please use this invoice reference number.

DELIVERY MAY BE WEATHER AFFECTED

We despatch 'Autumn' orders through from mid September to early November dependant on the prevailing conditions, the 'Late Summer' orders between late Aug and mid September.

DELIVERY CAN BE TAILORED TO YOUR NEEDS

We use the Post Office (Royal Mail) for smaller parcels, DPD Local for larger parcels. Both organisations now allow us to specify Safe Place Leaving Instructions and if these are provided no signature on delivery is required, the delivery will be made following those instructions. If you do not specify a Safe Place you will have to sign for the parcel or arrange a redelivery on receipt of their card. If you might be away during our delivery season, please tell us – we can fit around most dates.

Providing us with your email address means that you will receive an email from us confirming despatch of your parcel, and a further email from DPD Local (if your parcel is bigger) confirming the expected delivery date and time slot of one hour.

If you wish to collect your order please either advise us of the intended date or allow us to suggest one. Around most dates up to the end of October.

PLEASE RAISE PROBLEMS PROMPTLY

While we try to ensure everything is correctly named and labelled, errors do occur occasionally. If we seem to have made a mistake please tell us as soon as possible; late complaints are very difficult to deal with in the same reason if stocks are limited. Regrettably, the bulbs we sell cannot be absolutely guaranteed to flower and thrive, nature is fickle sometimes and we cannot be responsible for its vagaries, or even poor gardening.

We do keep computerised records with your name and address and order history for our own business use and for our carriers to communicate with you regarding a delivery. We will not sell or pass on your details to any other businesses and all credit card details that are stored by us are done so in an encrypted manner that we cannot ourselves view. Please see Page 8 for the full GDPR Privacy Policy.

By placing an order with us customers are agreeing to these terms. If you do not wish to receive any marketing material from us please let us know.

Overseas customers are requested to check the website for details of the costs of shipping to the European Union. The minimum postal cost for non UK orders is £10.00.

Five year Diaries!

This remarkable diary really is a real memory builder!

As you fill one entry you cannot help but look back to what you wrote on the same day in past years. Keeping a record year on year of the weather for the day can really help you understand your garden and its microclimate, as well as remind you of your gardening successes and lessons to learn. But you can also include films you saw, books you read, how much jam you made, who called for a chat or came to dinner, what you ate, what the grandchildren told you, the list is endless!

Finished in a wipe clean cover and spiral bound with botanical illustrations by Susan Olgilvy marking the start of each month. 6" wide (15 cm) and just over 9" deep (23.5 cm) and weighing 770g these are provided in a purpose made delivery sleeve and can be posted at any time (they make great Christmas presents) but can be started at any time of year. Unique to ourselves and not available elsewhere.

£17.50 including P&P (within UK) Additional EU postage £6.00



Seeds from Avon Bulbs

We have a seed box which travels to the shows and from which customers can pick out seed packets that they might like to purchase. The range is small and generally reflects the plants that we have grown and are showing to associate well with the bulbs on the display (but the annuals flower from seed very much more quickly than bulbs).

But many of our mail order customers do not see us at the shows and may like the chance to buy a packet or two? Availability may be limited depending on the demand at the shows!



Allium cernuum

Claret pink flowered plants of reasonably well drained locations in full sun. Of North American origin and hardy in the UK, self sown seedlings spreading and thickening one's clumps. Summer flowering about 18" (45 cm) tall with leaves that persist for much of the year. The flowers are good for beneficial insects. They may take 3 years to flower from seed, some will flower in their 2nd year



Camassia leichtlinii 'Avon's Stellar hybrids'

Hardy North American plants, Camassia all like heavy soils in sun or part shade. They flower in late April or early May, (after the blue flowered forms which produce little or no seed). The flowering plants are 24-26" tall (60-90 cm). Colours will vary - pink, lilac, blue, cream and green.



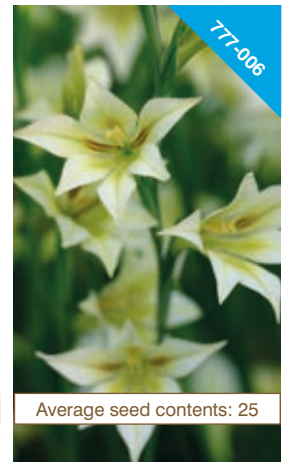
Cerinthe major 'Purpurascens'

A hardy annual from the Mediterranean region, known as Honeywort. An aristocratic border plant which is beautiful and versatile. It is adored by bees and is much favoured as a cut flower. It has glaucous leaves with interesting purple bracts and bell shaped flowers from May to September.



Dahlia coccinea var palmeri

Single orange-red flowers in late summer on a plant which exhibits very dissected 'frothy' foliage. The plant can be large, the seed was collected from an established plant about 7' tall. Dahlias like a rich fertile soil and need planting in the sun. They may need a mulch (or to be lifted) in cold gardens, but the species forms seem harder than the hybrids. These should flower in their first season.



Gladiolus tristis

A beautiful South African species that flowers in April/May in Britain with wonderful pale straw coloured flowers with pretty green highlights and a good perfume in the evenings. 3-4' (30-40 cm) tall. They will need a sheltered situation in cold gardens or cold districts, but if they can be grown in a favoured spot they will set seed and increase. They are in leaf through much of the winter when they will cope with temperatures down to -3°C.



Nicotiana mutabilis (Ornamental Tobacco)

A striking tender plant up to 5' (1.5m) with showers of white flowers which turn through pink to a deep magenta as they mature. The effect is spectacular with both colours present on the plant together. Flowers in the late summer. If a plant is overwintered (in frost free conditions) flowering is much earlier and more profuse the second year.



Nectaroscordum siculum

Closely related to Alliums (the ornamental onion), originally from Asia minor and Mediterranean these have tall smooth stems on which there open dangling bell shaped flowers in pink, purple and green. When dry they stand erect. The whole plant is very garlic scented when handled. They grow best in lighter soils in sun or part shade and are happy growing in grass. They flower in the early summer about 30" (75cm) tall.



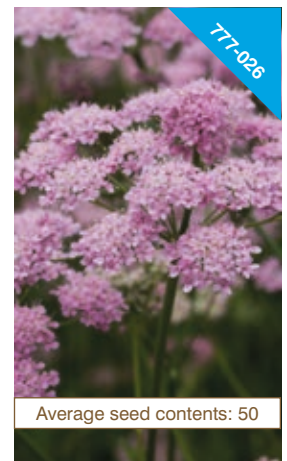
Nigella papillosa 'African Bride' and 'Midnight'

The species is an annual and native to southern Spain and southern France and is synonymous with N. hispanica. These are collected oddities with greatly enlarged and contrasting stamens. White flowered plants with purple-black stamens as well as deep blue flowered plants with blue stamens. A lovely mix that flowers over the typical 'Love in the Mist' foliage which is fine and fennel-like.



Orlaya Grandiflora (White Lace Flower)

A plant of meadows, vineyards and olive groves in the Mediterranean. Fern-like foliage and lace-like white umbels, with the outer petals larger than the inner. 18-24" tall (45-60cm). An easy to grow annual setting seed that you can collect and grow.



Pimpinella major rosea

Deep pink umbels of small flowers, they look like a pink flowered cow parsley. Blooms in May/June, ideally in the sun or light shade, 40" (100cm) tall. Sow the seeds in the autumn in ordinary garden soil or gritty compost (as they require chilling to break the dormancy) and overwinter the seed tray outside. They may not germinate until the spring. Prick out into small pots when the seedlings are large enough to handle and when these plants are large enough themselves plant into their final position.



P&P for any number of seed packets ordered alone within UK £1.50, or destinations within the EU please add £2.50 P&P

Any packet
of seeds
£2.50



777-019

Average seed contents: 10

Lunaria annua Chedglow

Hardy biennial flowering April to early May with wonderful chocolate leaves and lilac flowers, growing to 3' (1 m) or a bit more. Decorative seed heads can be used in dried arrangements.

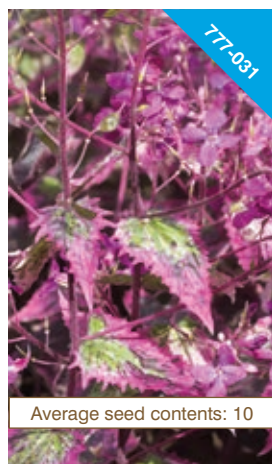


777-028

Average seed contents: 10

Lunaria Corfu Blue

Hardy biennial, flowering in the spring often earlier than other Lunaria, with purple-blue flowers on purple flushed stems, growing to 3' (90cm) tall and a spread of up to 30" (75cm). The seed cases are distinctive as papery silvered seed heads. These may hybridise with other Lunaria close by. The leaves are browsed by rabbits.



777-031

Average seed contents: 10

Lunaria Somerset Marble

Hardy biennial, flowering in the spring with purple flowers and wonderful marbled leaves, often edged in red, growing to 3' (90cm) tall. The seed cases are like translucent discs that can be used in dried arrangements. Sow two seeds per single pot outside in a shady sheltered spot and plant out into the border in full sun or part shade when large enough.



777-013

Double Black



777-014

Double Lilac

Papaver somniferum

Fully double flower heads of various colours. June flowering about 36" (90cm) tall. May need staking in windy gardens. They are plants of open, sunny situations in well drained soil and are hardy, but annual, so you will be reliant on falling (or collected) seed for future years. Self fertile, but some slight variation in flower colour may occur.



777-012

Double Shiraz



777-011

Double Pink



777-017

Blackcurrant Fizz



777-029

Average seed contents: 50

Tagetes patula

Varying from deep red through to yellow a gloriously warm mix of colours on well branched and bushy plants. A well known and loved annual that flowers all summer, even from seed sown as late as June to fill in some bare patches. Sow them thinly in sunny fertile soils that have warmed up from March to June and water in.



777-010

Average seed contents: 15

Tulbaghia cominsii x violacea

Long flowering perennial of South African origin. Long thin leaved foliage, onion scented when crushed. Purple — pink flowers from June to October, 18-24" (45-60 cm) tall. Seedlings may vary, due to the hybrid nature of the plant. Plants flower in their second year. Very good patio plants in planters, enjoying warm conditions and very drought tolerant. In cold areas mulch plants in the ground in winter and protect pots from extended freezing temperatures. Hardy outside to about -10° C.



777-023

Average seed contents: 30

Tulipa sprengeri ♀

May flowering species tulip, now unknown in the wild. Red flowered, often verdigris marked on the outside with contrasting golden anthers. About 18" (40cm) tall. May take 3-4 years to flower, but avoid disturbance in the area. Once flowering will self seed. Bulbs flower when grape sized or larger.



Glove sizing: If unsure this is a guide – finger to wrist, or right round the palm, whichever the larger measure – under 8" we think the Small (7) size is likely to fit best, over 8" our Medium (10) may be better.

MAXIFLEX GARDENING GLOVES

More and more people now garden in gloves. These are hard wearing and comfortable gardening gloves that still allow you to feel what you are doing but most importantly one's hands do not sweat inside them. Washable (inside out in a cool wash). The Medium size fits nearly everyone here, though a Small size is offered too. Include these with an order for £5.00 each (sent on their own please add £3.00 postage).

669 - 01 Maxiflex gloves (Medium) £5.00
669 - 02 Maxiflex gloves (Small) £5.00

P&P for any number of seed packets ordered alone within UK £1.50, or destinations within the EU please add £2.50 P&P

2020 Collections

Themed Collections of Bulbs for autumn planting in pots or the garden.

Ideal as
Gifts

Allium Collection

999-372

£19.50

hollandicum x 10

Powder Puff x 5



Violet Beauty x 5

sphaerocephalon x 15

Crocus vernus Collection

999-373

£24.00

Flower Record x 15

Golden Yellow x 15



Pickwick x 15

Queen of the Blues x 15

Narcissus Collection

999-374

£26.50

Sailboat x 15

Pipit x 10



Segovia x 10

Topolino x 15

A Layered 'Lasagne' Planter

999-375 (Planting instructions included)

£18.50

Narcissus Minnow x 10

Narcissus Oxford Gold x 10



Muscari Baby's Breath x 10

Tulipa Purissima x 10

Please specify plants and costs here,
and complete the other side of the form.

You can also include any of the last four items in the Late Summer section (pages 5-7) in particular any *Cyclamen* and *Iris unguicularis* on this order form for Autumn despatch.

total

Please fold this sheet into a smaller envelope to avoid postal surcharges



Mail Order for Autumn 2020

Plants and bulbs to flower in the spring

Office use only:

Date received:

Order No:

AVON BULBS LTD • BURNT HOUSE FARM • MID LAMBROOK

SOUTH PETHERTON • SOMERSET • TA13 5HE

Title: Mr ☐ Mrs ☐ Miss ☐ Other _____

Name: _____

House Name/No: _____

Street: _____

Town: _____

County: _____

Country: _____ Postcode _____

Telephone/Mobile No: _____

Email address: _____

It may be helpful for us or the carrier to contact you if any problems arise.

Please complete these questions (We now need your permission to stay in touch, except with regard to this order)

By Post: Are you happy to receive our printed catalogues in the future? ☐ **Yes** ☐ **No**

By Email: Do you wish to receive occasional emailed Newsletter from us along with any Special Offers? ☐ **Yes** ☐ **No**

(We will not sell or pass on any contact details except to manage your order (see more on this on page 8))

Other Delivery Instructions:

Is this an order for collection? ☐

Is it a gift? ☐

If you are likely to be out during the day, please suggest where the parcel should be left or who else might accept delivery.

If you want your order to be sent as a gift to someone else (invoice to you), tick the box and put the recipient's name and address and postcode in the space provided to the right.

Payment Orders are not accepted without payment except by prior agreement.

Please include payment or please charge my Visa / Mastercard account.

Cheque enclosed ☐ Yes, value £ _____, or

Card No. · · ·

Valid from date / Card expiry date /

Security code (last three digits on reverse of card) Signature _____

Please fold this sheet into a smaller envelope to avoid postal surcharges



Ideal as
Gifts

2020 Collections

Colour Themed or Seasonal Tulip Collections.
10 of each of 4 varieties for planting in pots or the garden.

White Tulip Collection

999-376

£25.50

Angel's Wish x 10

Calgary x 10



Elegant Lady x 10

Honeymoon x 10

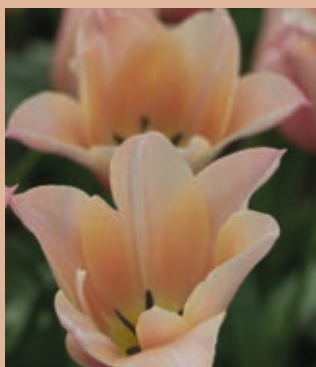
The Calm Tulip Collection

999-378

£27.50

Cummings x 10

Foxtrot x 10



Green Star x 10

Sanne x 10

Zesty Tulip Collection

999-377

£23.00

Annie Schilder x 10

Ballerina x 10



Lambada x 10

Princess Irene x 10

The Striped Tulip Collection

999-379

£22.50

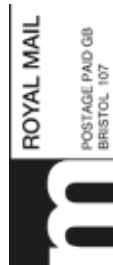
Firework x 10

Flaming Flag x 10



Grand Perfection x 10

Spring Green x 10



Delivered by



If undelivered please
return to sender:
Avon Bulbs
Burnt House Farm
Mid Lambrook
South Petherton
Somerset
TA13 5HE



DORMANT SNOWDROPS

Because the catalogue has been delayed and as a result of the summer shows being cancelled we have been able to deal with many of the snowdrops rather earlier this year so the opportunity arises to be able to advertise them in this catalogue – normally they are only sold Online in the summer having missed the catalogue publication.

There is also some doubt about whether we shall be able to attend the Snowdrop events next February – there is obviously some uncertainty about such sales given that the attendees are often quite mature and may feel reluctant to attend, social distancing may be difficult to achieve and (for events in Europe) we will now require much more paperwork in order to cross into Europe post Brexit (Galanthus being on the CITES list).

For all these reasons and also because snowdrops are easier to pack and despatch

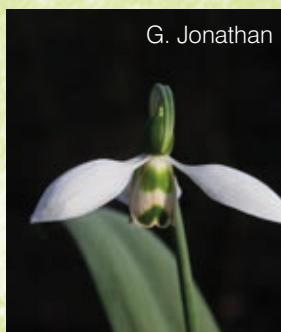
when dormant (and not having to pot and look after them for another 6 months would help!) we feel that selling more of them when dormant may be the way forward.

The full list will still be available online towards the end of July on the Avon Bulbs website (under the Shop tab look for the Dormant Snowdrop heading) and we would ask that you **order these Online or by phone** – these are orders that we will be able to despatch very promptly but for some varieties there is only a very limited number available, occasionally under 10 bulbs.

The list includes two of five vigorous and very different snowdrops which will charm someone just starting into snowdrops, or indeed offer a cheaper means of acquiring a number of different varieties in order to see the differences that make snowdrops so collectable.



G. Fieldgate
Prelude



G. Jonathan



G. Hercule



G. Trumps

SNOWDROP COLLECTION NO. 1

All these are ones that increase steadily, are big flowered and very eye-catching.

999-380 £45.00



G. Lord
Monostictus



G. Imbolc

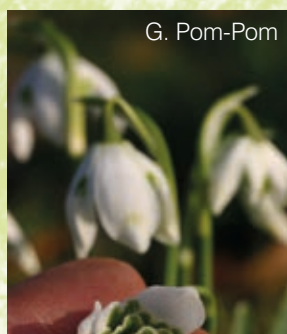
SNOWDROP COLLECTION NO. 2

Varied in flower shape and form these subtly build on Collection No 1.

999-381 £55.00



G. Sir Herbert
Maxwell



G. Pom-Pom



G. Acton
Pigot No 3



G. Heffalump